

Laser Marking

MARKING ON THE GLASS SURFACE



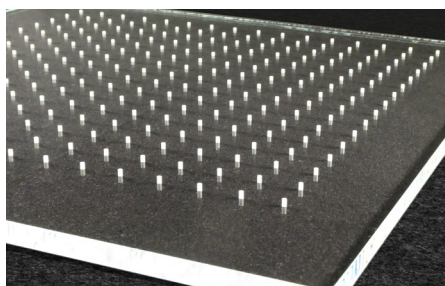
Advantages:

- Scratch-resistant, and extremely durable marking
- highest resolution and good contrast
- Application of serial numbers, matrix and bar codes for serialisation
- No or minimal roughening of the glass surface and no glass weakening
- Can be used on glass before and after the tempering process as well as on coated glass surfaces
- Very fast, flexible and touch-free marking method with marking times in the range of seconds
- On request with data interface to your order management software for automatic marking

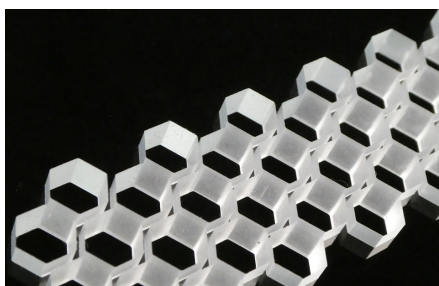
Applications:

- Tempered glass marks
- Marks for vehicle glazing
- Automation of glass processing and tracking of parts
- Device fronts
- Technical glass in general
- Decoration purposes
- Interior glass
- Luminaire covers
- Etc.

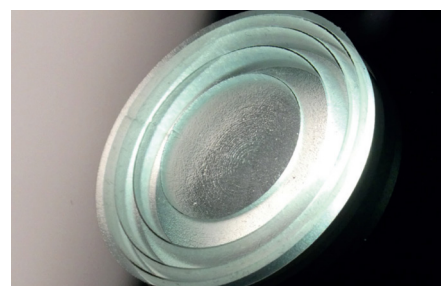
Applications



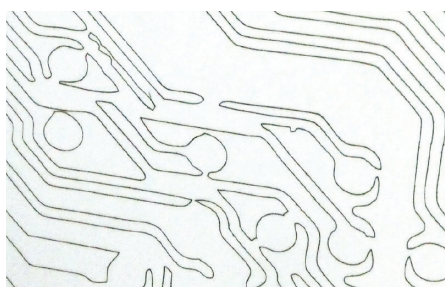
Laser-acoustic glass (2.500 holes /m²)



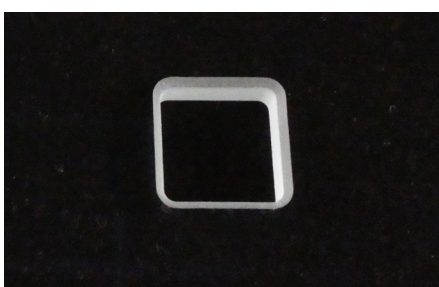
Laser drilling & cutting



Laser CNC process



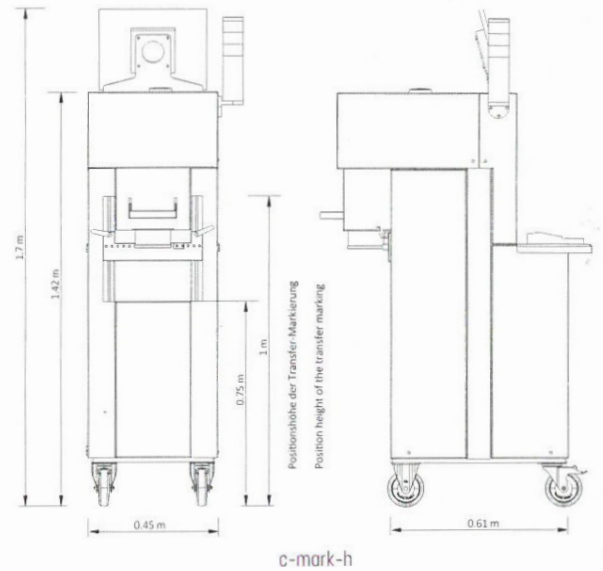
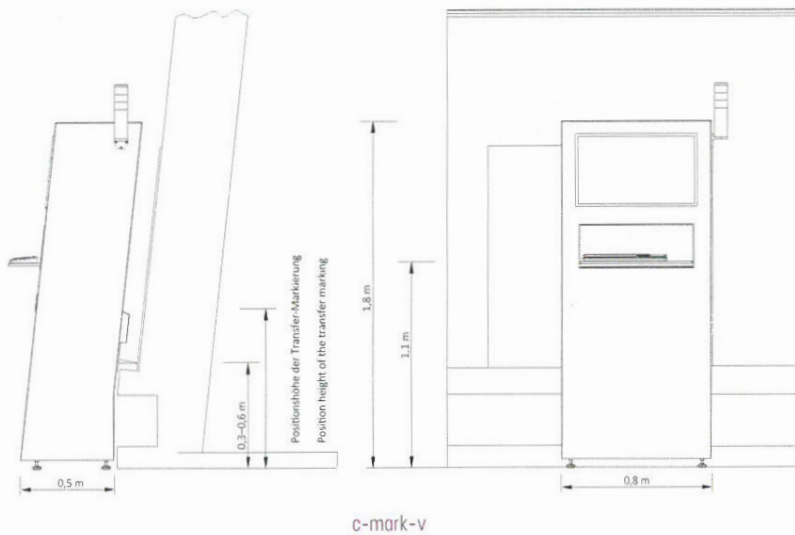
Laser-structuring



Bevelled laserdrilling



Improved wireless reception



c-mark-h | c-mark-v

The c-mark-h (laser marking system for horizontal operation) is the compact standalone solution for flexible laser marking. However, it can also be integrated into an existing production line.

The in-line system c-mark-v can also be flexibly integrated into the production line.

Take advantage of the variety and flexibility of laser marking. Cericom offers you various laser-based marking processes that lead to very different appearances on or in the glass.

Whether discreet or clearly visible, whether as frosting, internal engraving or in spectral colours.

As marking systems, we offer you horizontal and vertical versions, which you can operate either as a stand-alone system or integrated into a line.

Company

The cericom GmbH is specialised in developing and manufacturing lasermachines for glass processing since 2002. Benefit from the expertise we have built up over the years.

We offer lasermachines for marking, edge deletion, structuring and ablation of thin coatings, for drilling/cutting/3D structuring of glass as well as for frosting and decorating.

We are happy to advise you also on other laser processes and your requirements.

