



Glassworks Pty Ltd in Melbourne , Australia

Self-Tinting Interlayer for Dynamic Windows

In Alliance with



SUNTUITIVE® INTERLAYER



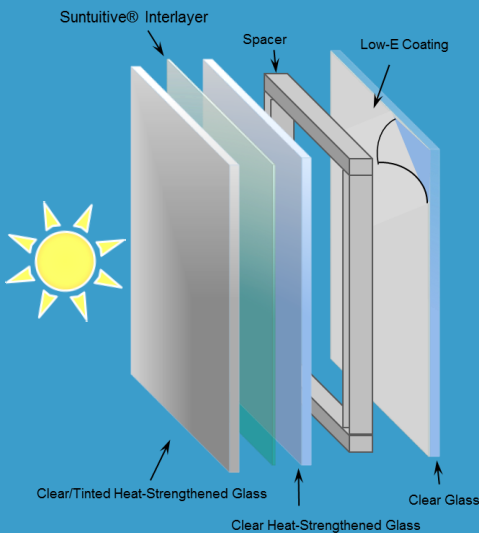
What's happening above:

All of the windows above have the same exterior tint of glass.
Only one pane does not contain Suntuitive interlayer.

Pleotint produces Suntuitive® interlayer that darkens gradually in response to rising temperatures caused by direct sunlight on the window, then cools as the sun moves across the sky, returning to a clear, neutral state in cloudy or dark environmental conditions when direct sun is no longer present.

Naturally

Typical Vertical Insulated Glass Unit (IGU) Configuration



Why Use *Suntuive*?

As part of a dynamic window system, *Suntuive* interlayer can help manage a building's changing needs for passive solar gain, solar control and natural daylight transmittance. Ultimately, that can lower costs associated with air conditioning, artificial lighting and heating, which together can represent up to 70 percent of a building's total energy consumption.

In addition, because of its laminated glass design, windows made with *Suntuive* interlayer reduce outside noise and enhance building security.

Building tenants also enjoy more consistently comfortable temperatures, reduced interior glare, more natural lighting and clear views of the outdoors every day of the year.

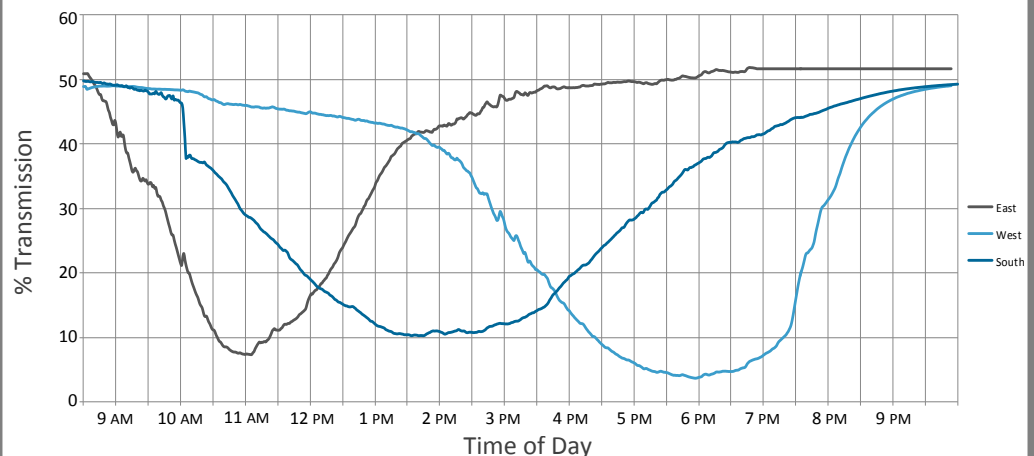
Suntuive dynamically darkens to balance the sun's heat entering a building throughout the day.

This creates a more consistent level of illuminance and temperature in a building throughout the year increasing occupant comfort.

Occupant comfort is maximized by:

- Clear view of the outdoors
- Allowing for increased use of daylighting
- More consistently comfortable temperatures
- Reduced glare

Suntuive Tinting Profile
Time of Day vs. Light Transmission



Adapts

BENEFITS

Preserving Your View

Suntuitive preserves your window's view by reducing the need for shades, blinds, exterior overhangs and other light-blocking devices.

- *Suntuitive* interlayer gradually darkens to a neutral gray
- *Suntuitive* helps block ultraviolet light and reduces absorbed heat and light which are significant causes of fading to:

Wall coverings, carpet, flooring, furniture, fabric, artwork, photographs

- As a laminated glass system, *Suntuitive* provides:
Impact resistance, sound reduction, insulation, enhanced building security, reduced interior glare

comfort
dynamic

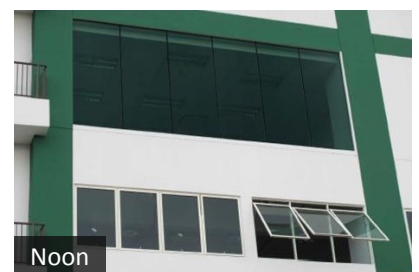
SUNTUITIVE IS SMART AND SUSTAINABLE

Green:

- Powered by heat from direct sunlight
- No manual, mechanical or electrical intervention
- With *Suntuitive*, occupants can quite literally see and experience the energy savings and well-being the technology offers
- Durable and maintenance-free
- *Suntuitive* is a GreenSpec® listed product putting it in the top 10% of green building products



Morning



Noon

Energy Savings:

- *Suntuitive* interlayer can help manage a building's changing needs for passive solar gain, solar control and natural daylight transmittance.
- *Suntuitive* can lower costs associated with air conditioning, artificial lighting and heating (which is up to 70% of a building's total energy consumption).
- Potential to significantly downsize a building's heating and cooling systems.
- The greatest energy savings come during time of peak energy consumption when energy costs are higher. That saves you money and is also good for the environment.

passive sustainable imagine

Suntuitive is Off-the-Grid



Many dynamic window systems require mechanical support, such as electricity and computer software, to transition between states of high and low transmission. These required devices not only add to the initial and on-going maintenance costs, but also increases their potential for failure.

Suntuitive interlayer eliminates those worries by drawing all of its operational energy directly from the sun. Because the darkening process is entirely self-sustaining, windows made with *Suntuitive* interlayer do not require any energy or manual intervention so they are virtually impervious to mechanical failure.

No wires, no worries.

LEED:

Suntuitive interlayer
can contribute toward
LEED certification in:

EAp2: Minimum Energy Performance (Required)	EQc8.1: Daylight and Views – Daylight (Possible 1 point)	RPC1: Regional Priority (Possible 4 points)
EAc1: Optimize Energy Performance (Possible 19 points)	EQc8.2: Daylight and Views – Views (Possible 1 point)	EQc2: Acoustic Environment (Healthcare) (Possible 2 points)
EQc6.2: Controllability of Systems - Thermal Comfort (Possible 1 point)	IDc1: Innovation in Design (Possible 5 points)	EQc7.1: Thermal Comfort - Design (Possible 1 point)

DESIGN OPTIONS

The *Suntuitive* Solution

In a typical window, the configuration and tint are fixed – but the environmental conditions are variable. Finding the right balance of visible light transmission (VLT) and solar heat gain has typically been a compromise. Now, *Suntuitive* interlayer offers a solution that provides a window with the ability to adapt to these variable environmental conditions when necessary.

Suntuitive Helps Create a Natural Balance

Suntuitive is perfect for:

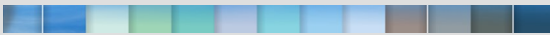
retrofits, new installations, commercial and residential use including replacement windows

Applications possible:

Vertical or sloped windows that can be curved or shaped

The possibilities are endless...

Suntuitive interlayer can be combined with most tints of glass and paired with many different low-e coatings



PRODUCT DETAILS

Installation:

Windows with *Suntuitive* install the same as any other typical window (or IGU)

Size: Approx. 5' x 10'

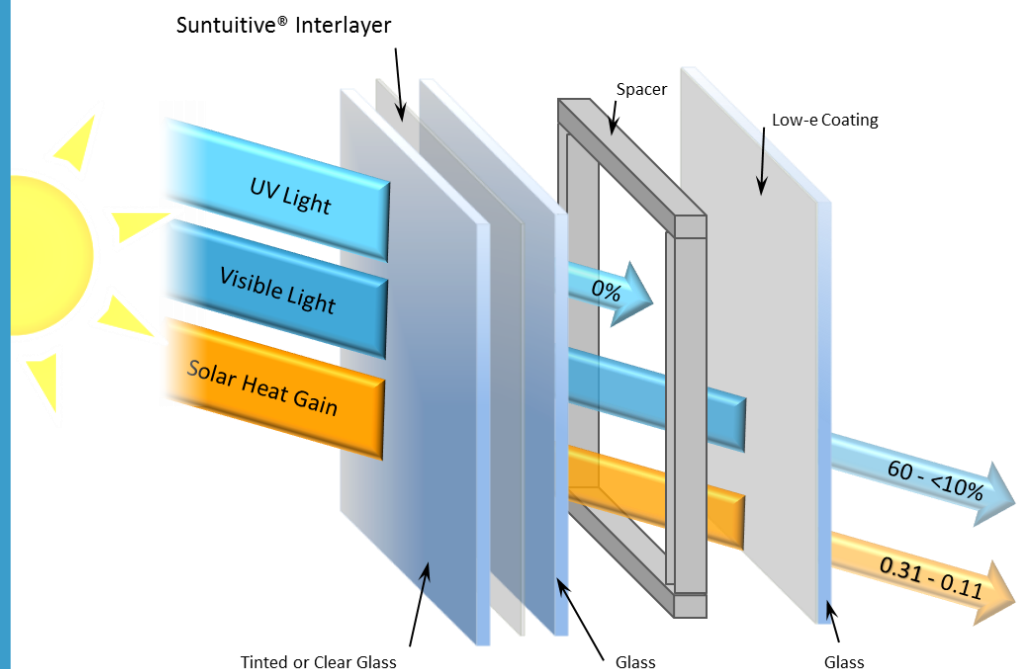
Durability:

Pleotint conservatively calculates a life span of 20+ years based on our own durability tests as well as:

- 8,000 hours of accelerated aging tests under ASTM E2141-06
- Independent testing at the National Renewable Energy Laboratory (NREL) and Qlab Corporation

Modeling:

Pleotint's *Suntuitive* interlayer is available on the International Glazing Database (IGDB)



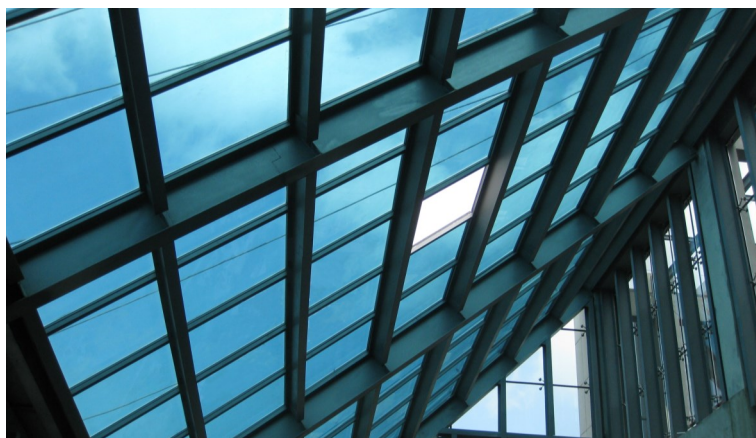
INSTALLATIONS



Wolverine Enclosures
Allegan, Michigan



Private Residence
Fenton, Michigan



Hotel
Shenzhen, China



Linel Architectural Glass & Metal Solutions
Mooreville, Indiana



Palm Springs Installation
Palm Springs, California



Private Residence
Holland, Michigan



Visit us: www.pleotint.com
Email us: info@pleotint.com
Call us: (616) 662.7216

REHAU® MONTANA ecosmart house in Bozeman, Montana
Photo courtesy REHAU® MONTANA ecosmart house

