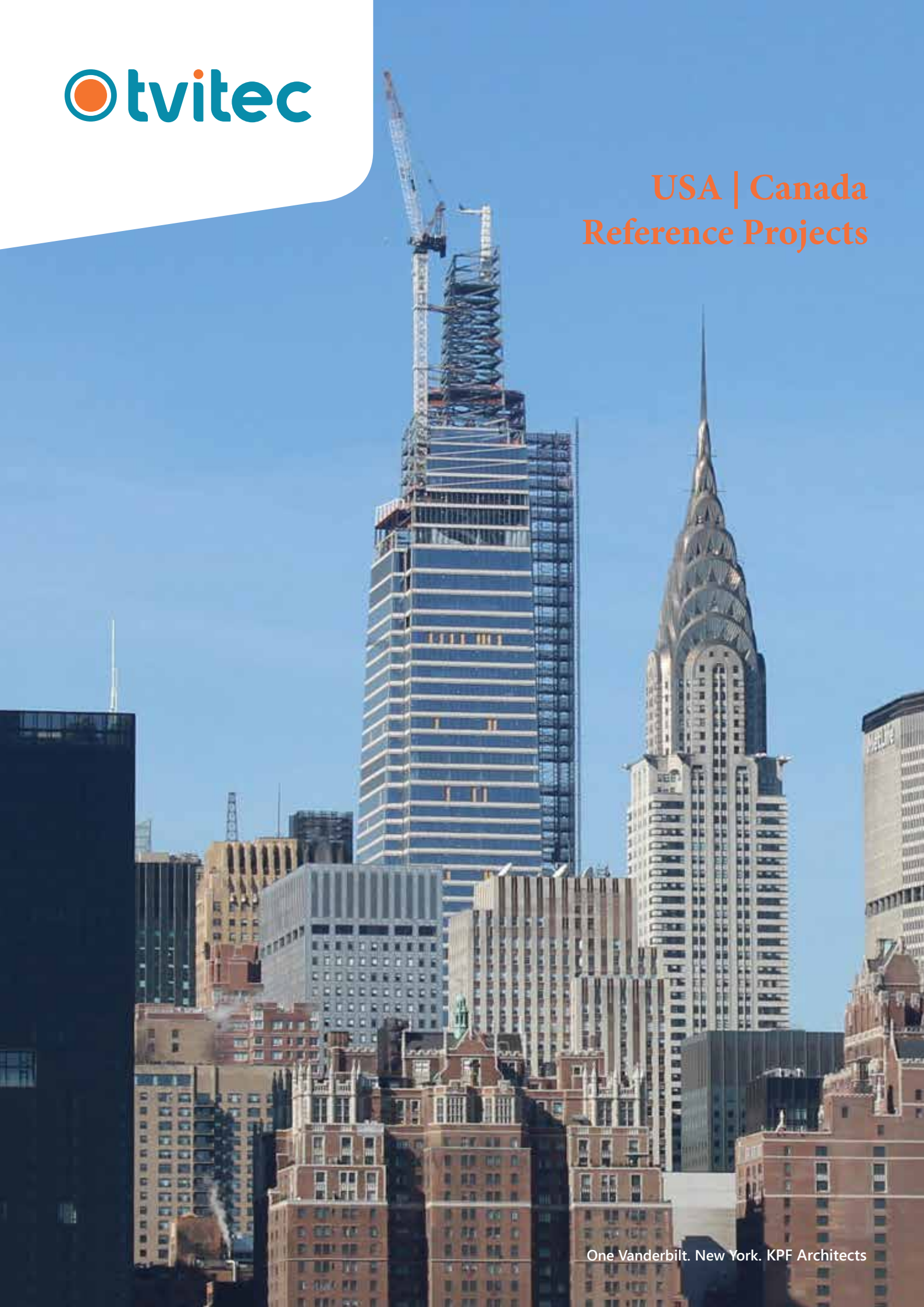




USA | Canada Reference Projects



One Vanderbilt. New York. KPF Architects



United States & Canada

Reference Projects 2020

Tvitec System Glass is an international glass manufacturer which after ten years of activity has become the first Spanish architectural glass transformer. The company and its 500 employees have developed into the world's technology an innovation leader for insulating, safety and digital printed glass.

Tvitec was founded in 2008. Its main manufacturing center is located in Cubillos del Sil - León (Spain). Its organizational structure an investment plans are focused on turning Tvitec into one of the world's largest high-performance architectural glass manufacturers for projects specialized in façade and building envelope on a global scale. Tvitec invoiced in 2017 over 100 Million Euros with an important increase in its turnover with respect to the previous year. The major part of these sales were generated in the international market.

The Spanish high-performance glass manufacturer supplies its products for a large number of singular constructions in the United States and Canada.

Tvitec is one of the largest suppliers of glass for residential and office buildings in Europe and America. At the moment the company participates in almost forty projects for the most important construction companies and facade developers. Tvitec manufactures tempered, laminated, insulating and printed glass.

It's one of the few industries in Europe with capacity to produce oversize insulating glass up to 12 meters (mega-jumbos).

Contents

MIDTOWN CENTER.	4	BROOKFIELD PLACE CALGARY	34
ONE MANHATTAN WEST	8	ONE SOUTH FIRST	37
VIRGIN HOTEL NEW YORK	12	ROCKEFELLER UNIVERSITY	38
HUNTER'S POINT	13	SURF CLUB. MIAMI FOUR SEASONS	40
RESTON STATION	14	55 BLOOR. MANULIFE CENTER	41
ONE MANHATTAN SQUARE	16	ONE DALTON ST. FOUR SEASONS	42
2000 ROSS STRET DALLAS	18	CAPITOL ONE. BLOCK C	45
160 LEROY STREET	20	NATIONAL AIR MUSEUM	45
2000 K STREET	22	LCBO TOWER.	46
50 WEST STREET	24	1441 L STREET	47
CAPITOL CROSSING & OTHERS	26	NORSTROM FLAGSHIP NYC	48
1345 AVENUE OF AMERICAS (Lobby)	27	LG ELECTRONIC HQ.	50
UNIVERSTY OF MICHIGAN	27	MACKIMMIE TOWER	51
NORTON MUSEUM OF ART	28	DIVERSITY GARDENS	51
145 WEST STREET. GREEN POINT	30	98 FRONT STREET	52
1000 MAINE AVENUE	31	GOTHAM RESIDENTIAL	53
MADISON CENTER (Rotunda)	32	ONE VANDERBILT	54
11 HOYT STREET	33		



MIDTOWN CENTER

Meters: 22.000 sqm.

SHOP Architects

Coating: Stopray Vision 50T

Stopray Vision 36T

1100 15th Street. Whashington DC





Located in the heart of staid Washington, D.C., SHoP Architects' 14-story Midtown Center establishes a prominent presence with a contorting copper-and-glass facade and a trio of sky bridges. Opened in September 2018, the one-million-square-foot project stands on the site of the former headquarters of The Washington Post.

To clad the bulk of the enclosure system, SHoP Architects turned to Spanish glass-fabricator Tvitec. For the 4,500 facade panels, the fabricator used Ipawhite low-iron glass subjected to multiple thermal coatings to ensure visibility while meeting thermal control standards.



ONE MANHATTAN WEST

Meters: 55.575 sqm.

SOM Architects

67-stories. Office Tower

Coating: Stopray Vision 50 T

High. 303 m

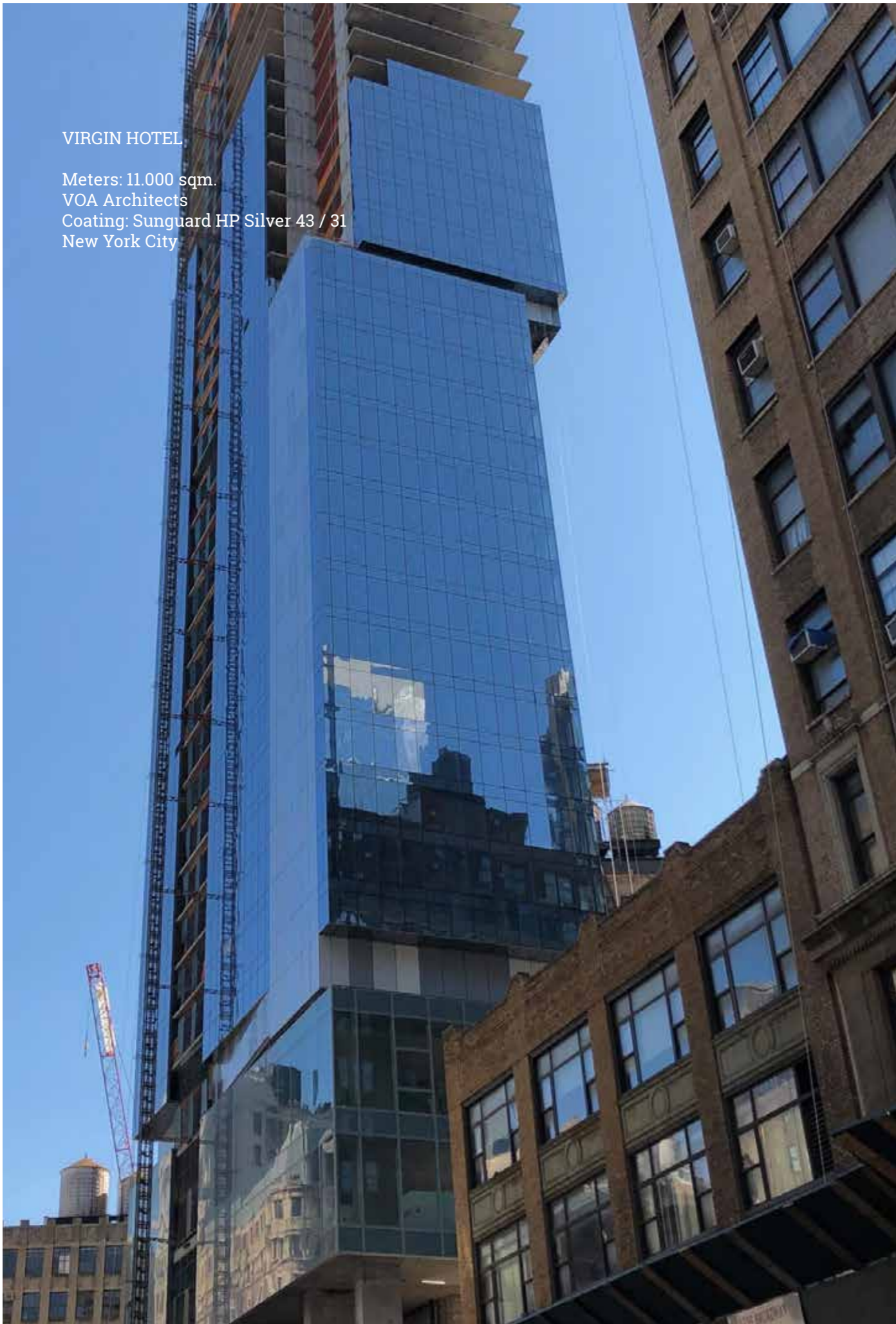
New York City



Manhattan West will feature nearly six million square feet of Class-A office space, luxury homes at The Eugene, and a boutique hotel. Gardens and street-front retail will bring together high-end, experiential shops and innovative culinary concepts, along with public art and events by Arts Brookfield, Brookfield's own arts and entertainment program.

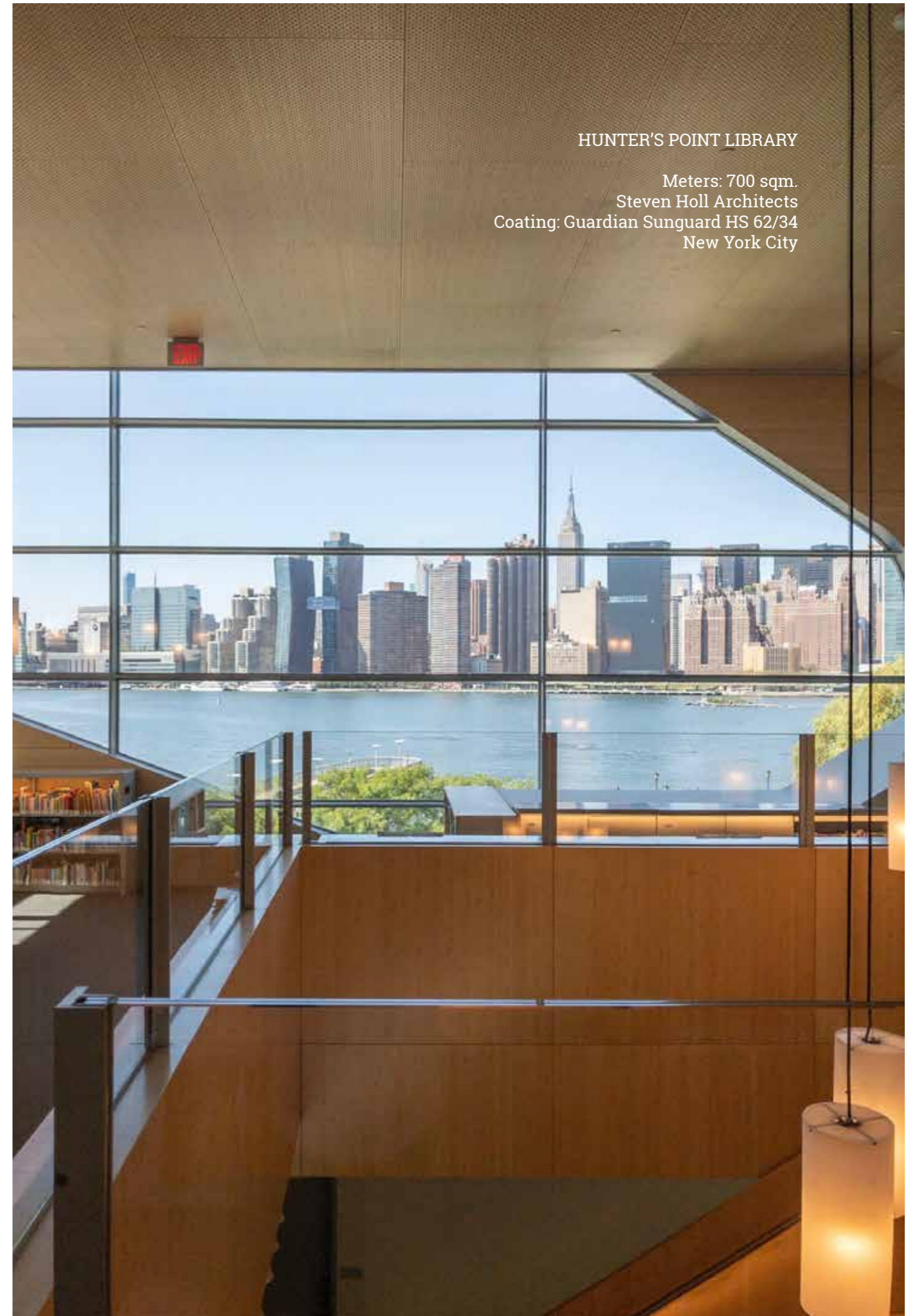
VIRGIN HOTEL

Meters: 11,000 sqm.
VOA Architects
Coating: Sunguard HP Silver 43 / 31
New York City



HUNTER'S POINT LIBRARY

Meters: 700 sqm.
Steven Holl Architects
Coating: Guardian Sunguard HS 62/34
New York City





RESTON STATION

Meters: 10.000 sqm.
Helmut Jahn Architects
Coating: Sunguard HS Superneutral 62/34
Reston, Virginia



ONE MANHATTAN SQUARE

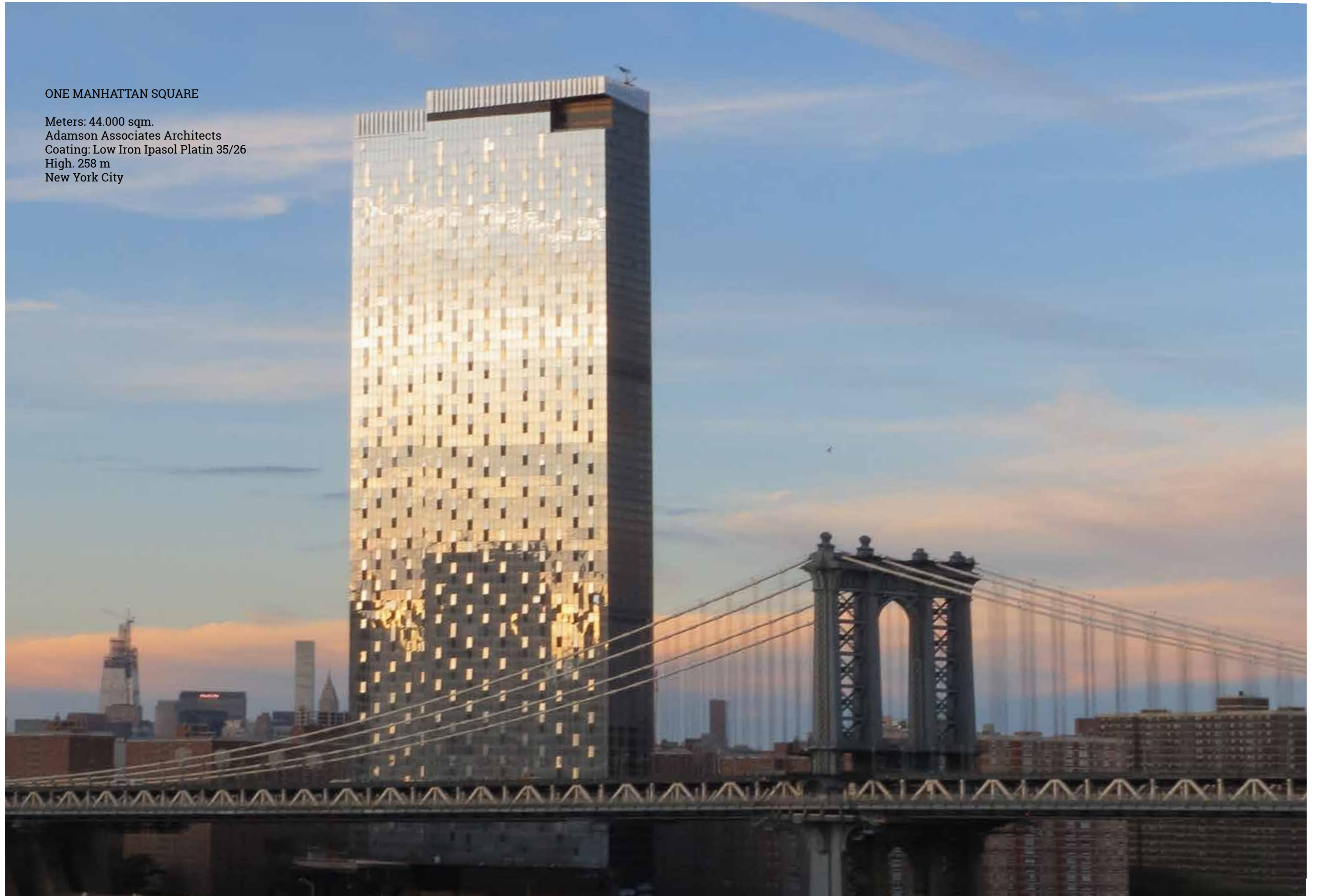
Meters: 44.000 sqm.

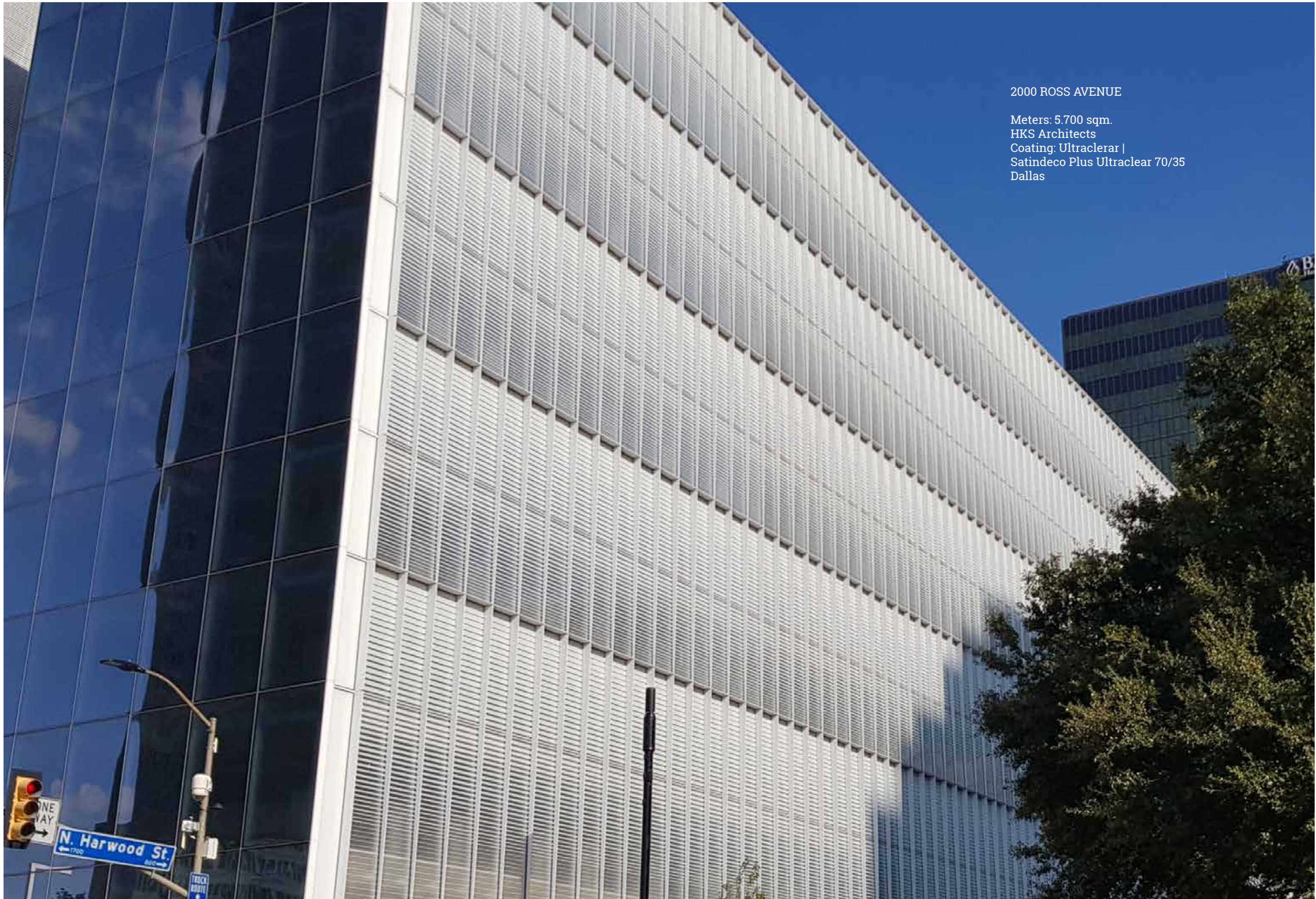
Adamson Associates Architects

Coating: Low Iron Ipasol Platin 35/26

High. 258 m

New York City





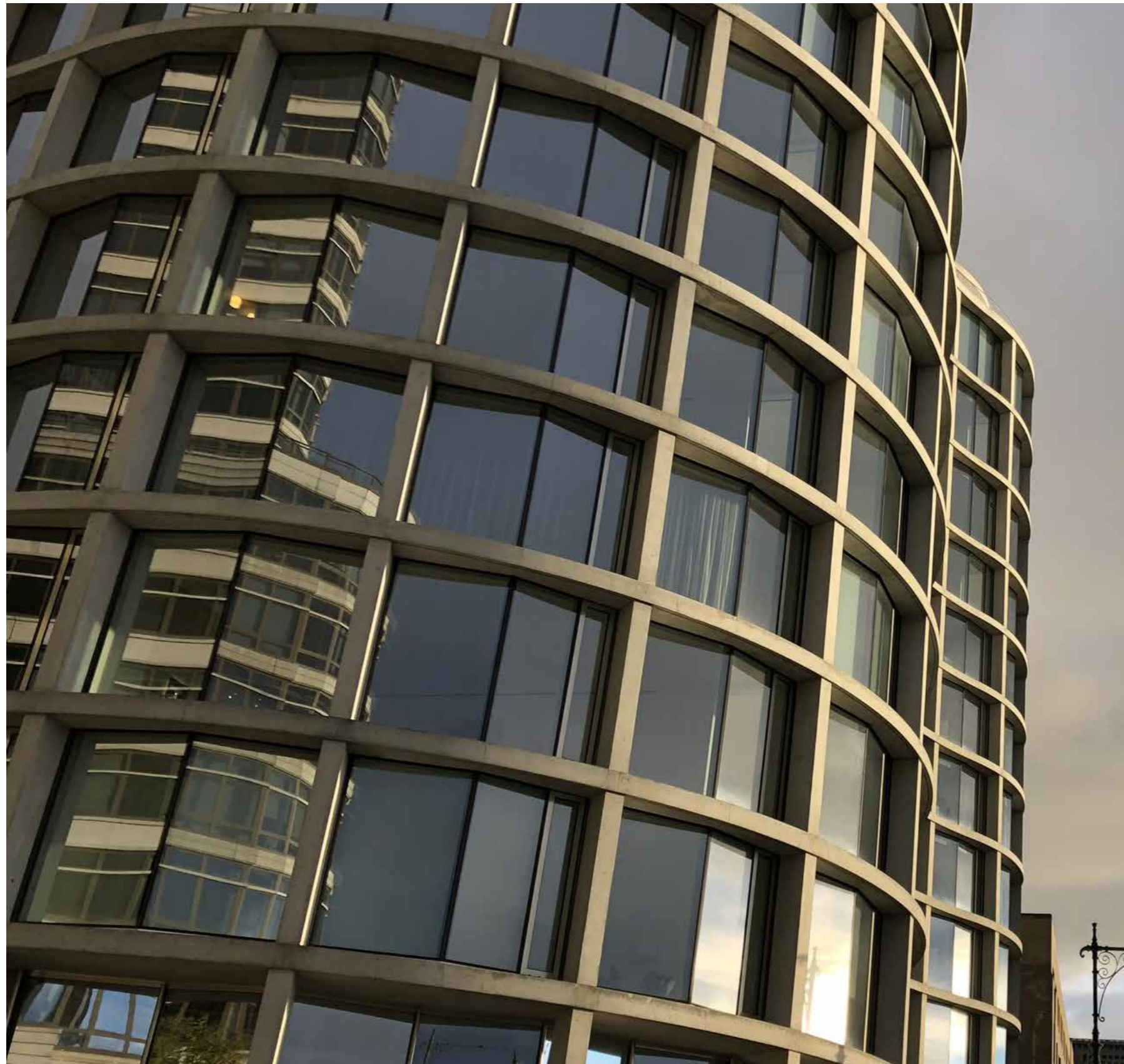
2000 ROSS AVENUE

Meters: 5.700 sqm.
HKS Architects
Coating: Ultraclerar |
Satindeco Plus Ultraclear 70/35
Dallas

160 LEROY STREET

Meters: 6.000 sqm. Completed
Herzog & De Meuron Architects

Coating: Ipasol Platin 52/36.
Luxury Aparment Building. New York City





2000 K STREET

Meters: 6.530 sqm.
SOM Architects
Coating: Saint Gobain Cool Lite SKN 054
Washington D.C.



50 WEST STREET

Meters: 15.229 sqm.
Helmut Jahn Architects
Coating: Sunguard Superneutral 70/41
High: 237 m
New York City





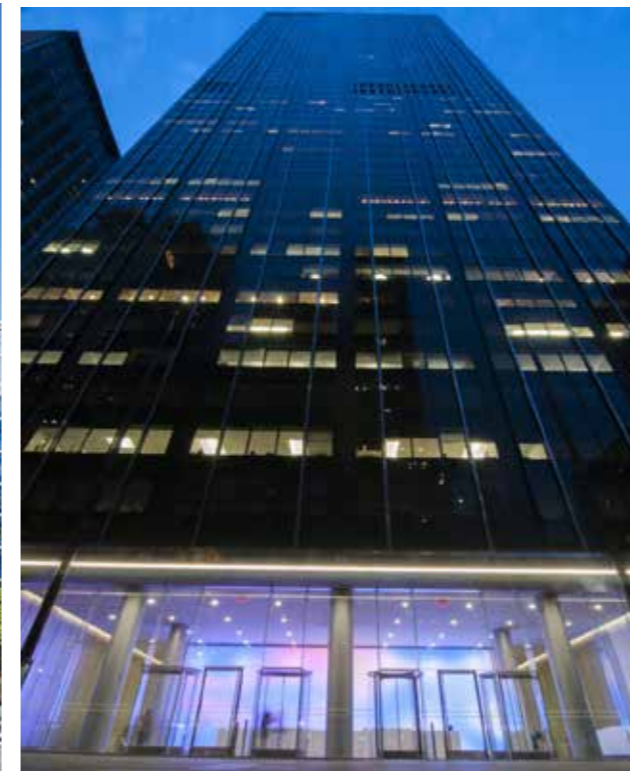
ONE POST SQUARE OFFICE

Meters: 25.000 sqm. Gensler Architects
Coating: Sunguard HP Silver 43/31 / HP Neutral 50/32
Boston



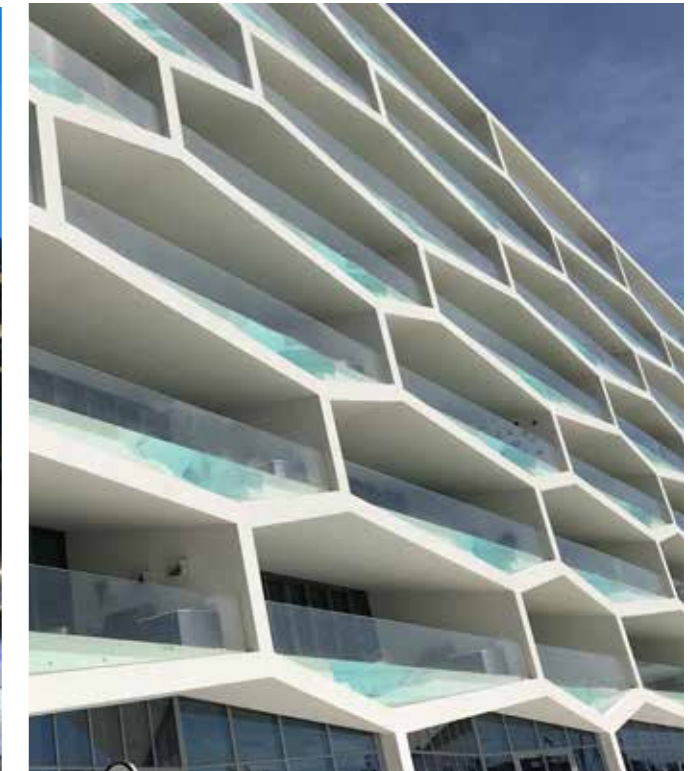
CAPITOL CROSSING

Meters: 20.000 sqm. KPF Architects
Coating: Guardian Sunguard SNX 60/28. Dual Point
Washington D.C.



1345 AVENUE OF THE AMERICAS. NEW LOBBY

Meters: 400 sqm. SOM Architects
Fins glass
New York City



HONEYCOMB BAHAMAS

Meters: 13.500 sqm. BIG Architects
Coating: Guardian Superneutral 40/23 HT
Providence. Bahamas



1333 H STREET

Meters: 300 sqm. Gensler Architects
Low Iron
Washington D.C.



2050 M STREET

Meters: 130 sqm. REX Architects
Coating: Sunguard SN 70/35
Washington D.C.



UNIVERSITY OF MICHIGAN. BIOLOGICAL SCIENCES BUILDING

Meters: 1500 sqm. Smith Group Architects
Coating: Sunguard HP Neutral 60/40 Ultra
Michigan

NORTON MUSEUM OF ART

Meters: 1.000 sqm.
Foster + Partners Architects
Coating: Pilkington Optiwhite / Bright White with SGP
Palm Beach, Florida



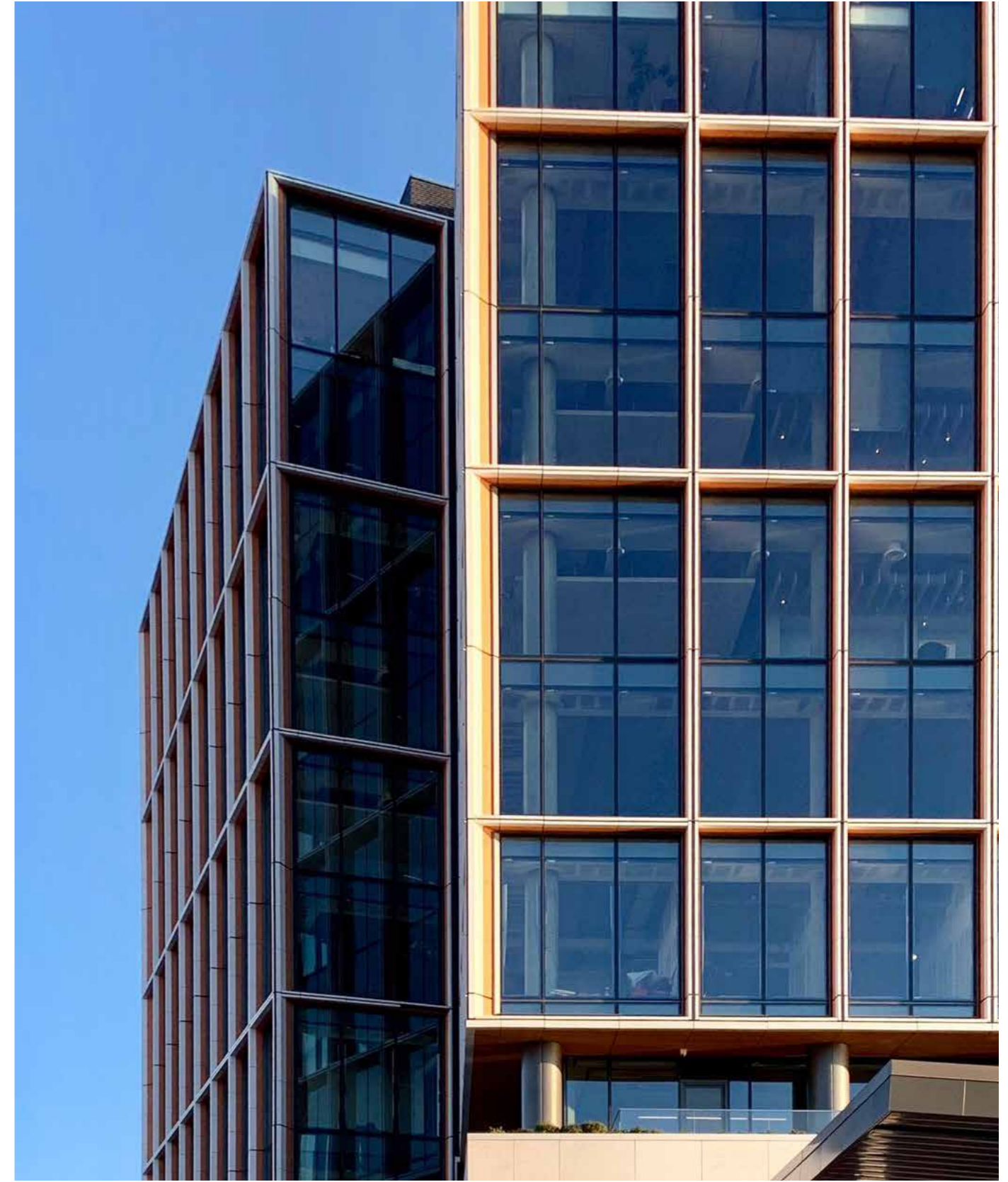
145 WEST STREET. GREEN POINT

Meters: 12.000 sqm.
Ismael Leyva Architects
Coating: Stopray Smart 51/33
New York City



1000 MAINE AVENUE. THE WHARF

Meters: 6.800 sqm.
Fox Architects
Coating: Guardian Sunguard 70/41
Washington D.C.



MADISON CENTER. Rotunda

Meters: 700 sqm. NBBJ Architects
Rotunda glass for new office building
Coating: Silverstar EN2. Tvitec Oversize Glass
Seattle



11 HOYT STREET

Meters: 10.000 sqm.
Studio Gang Architects
Coating: Sunguard Neutral HP 50/32
New York City





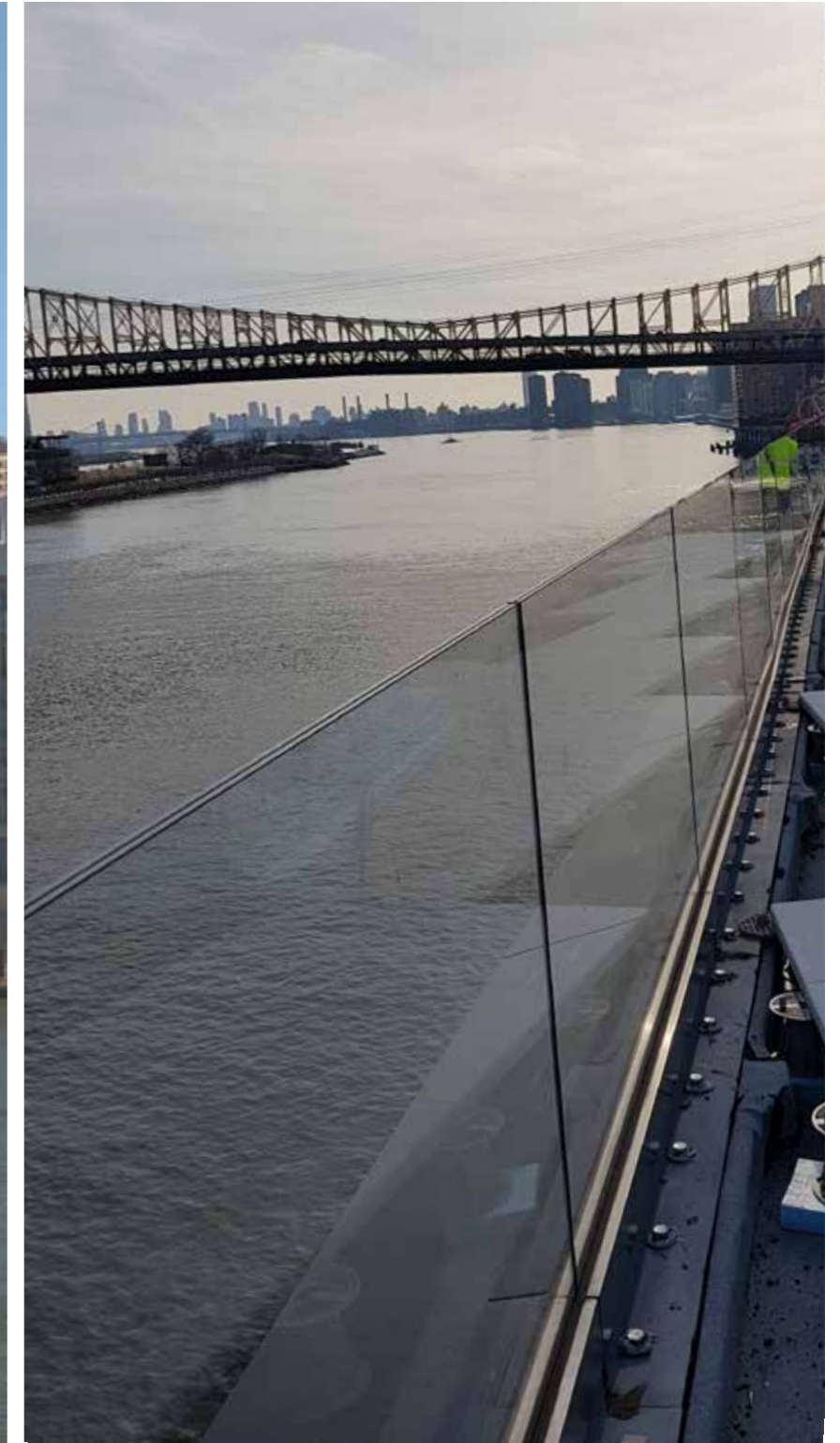
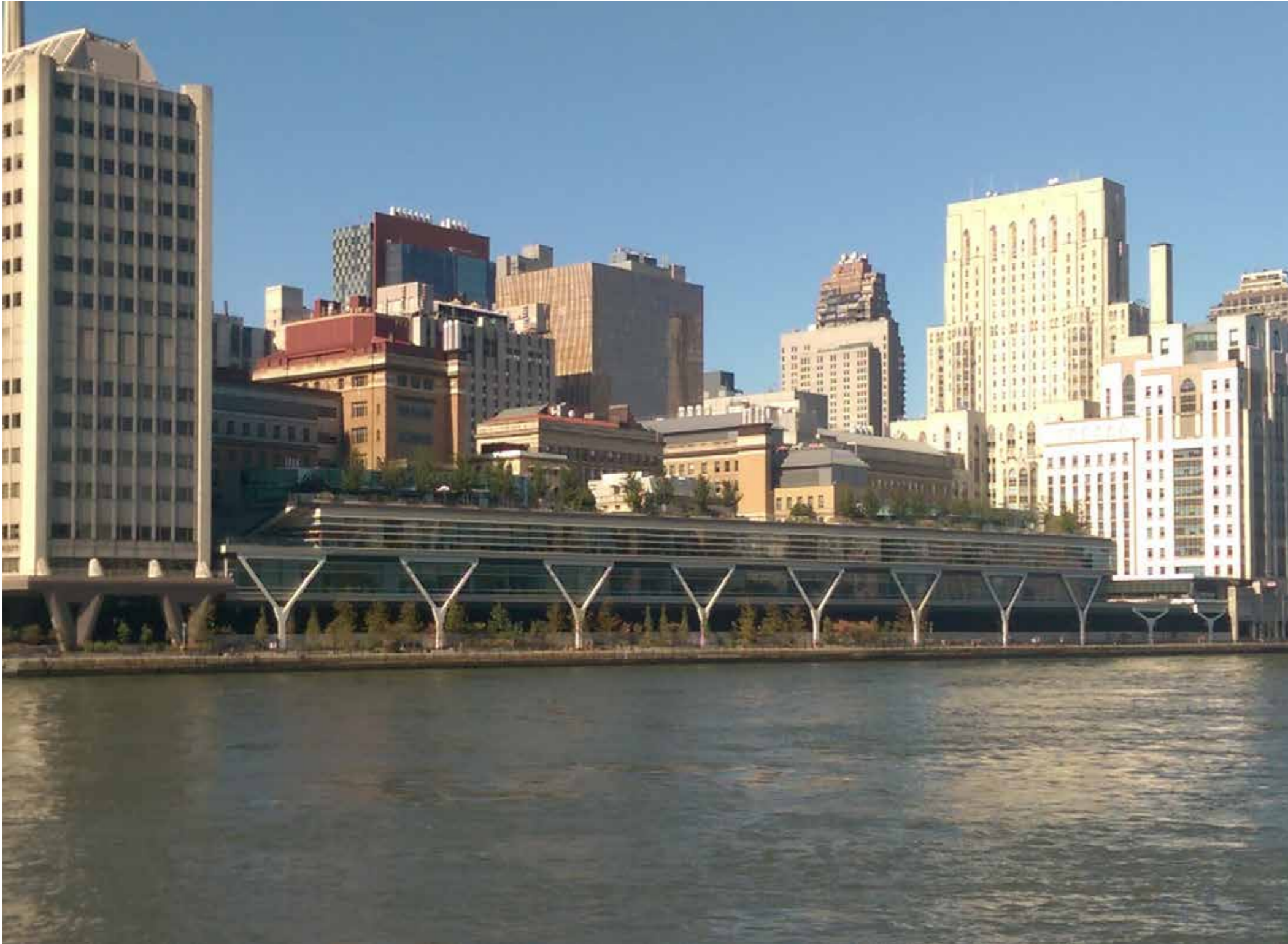
BROOKFIELD PLACE CALGARY

Meters: 43.500 sqm.
FKA Architects
High: 247 m. Office Tower
Coating: Stopray 51/33
Calgary, Canada

ONE SOUTH FIRST. SUGAR DOMINO AREA

Cookfox Architects
Coating. Sunguard SH 70S HT + Low Iron
New York City





ROCKEFELLER UNIVERSITY

Meters: 1.500 sqm.
Rafel Viñoly Architects
Coating: Guardian Sunguard SN 62/34
New York City





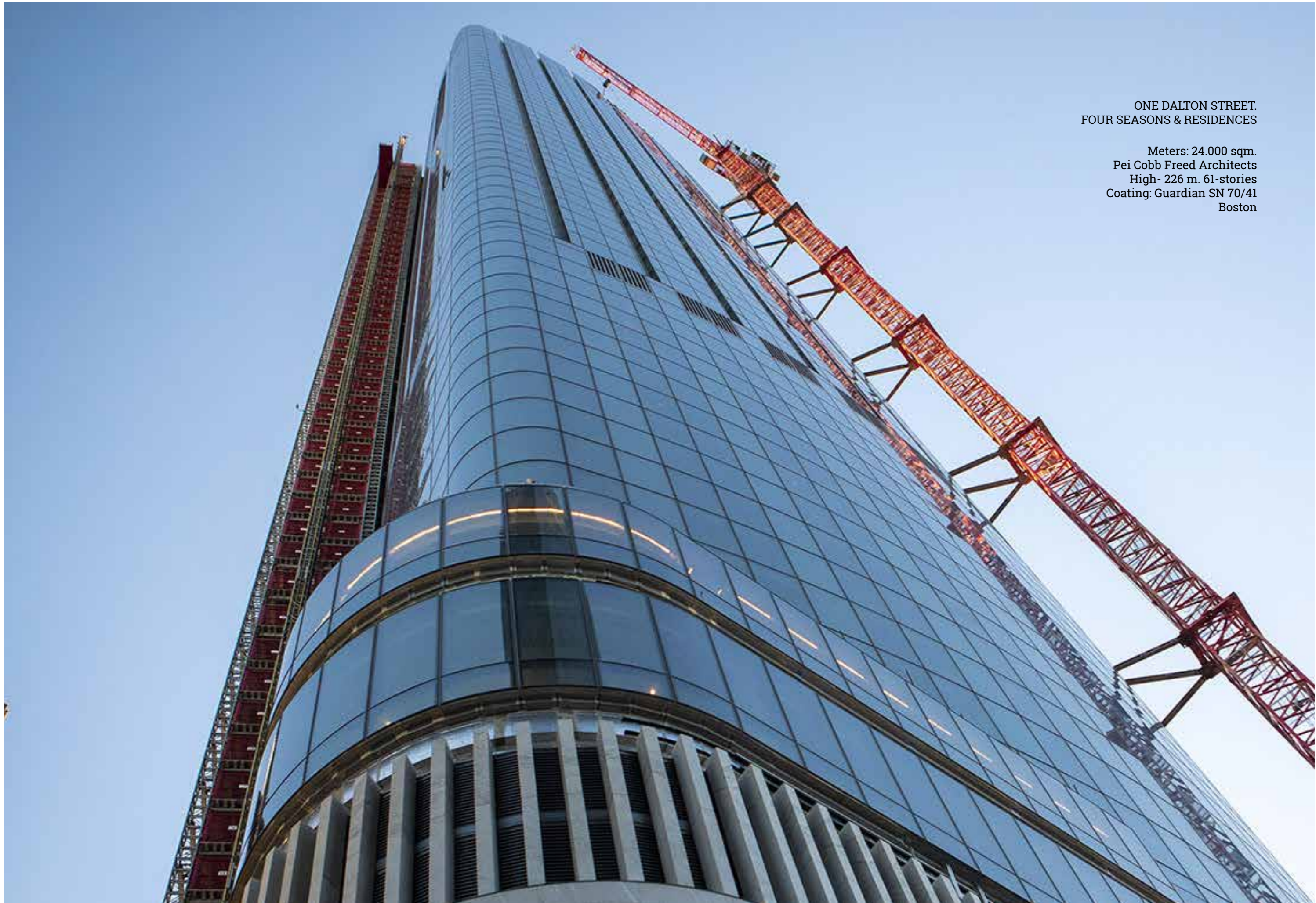
THE SURF CLUB.
MIAMI FOUR SEASONS

Meters: 9.000 sqm.
Richard Meier Architects
Balustrades. Tempered and
laminated with SGP
Miami Beach

MANULIFE CENTRE.
55 BLOOR

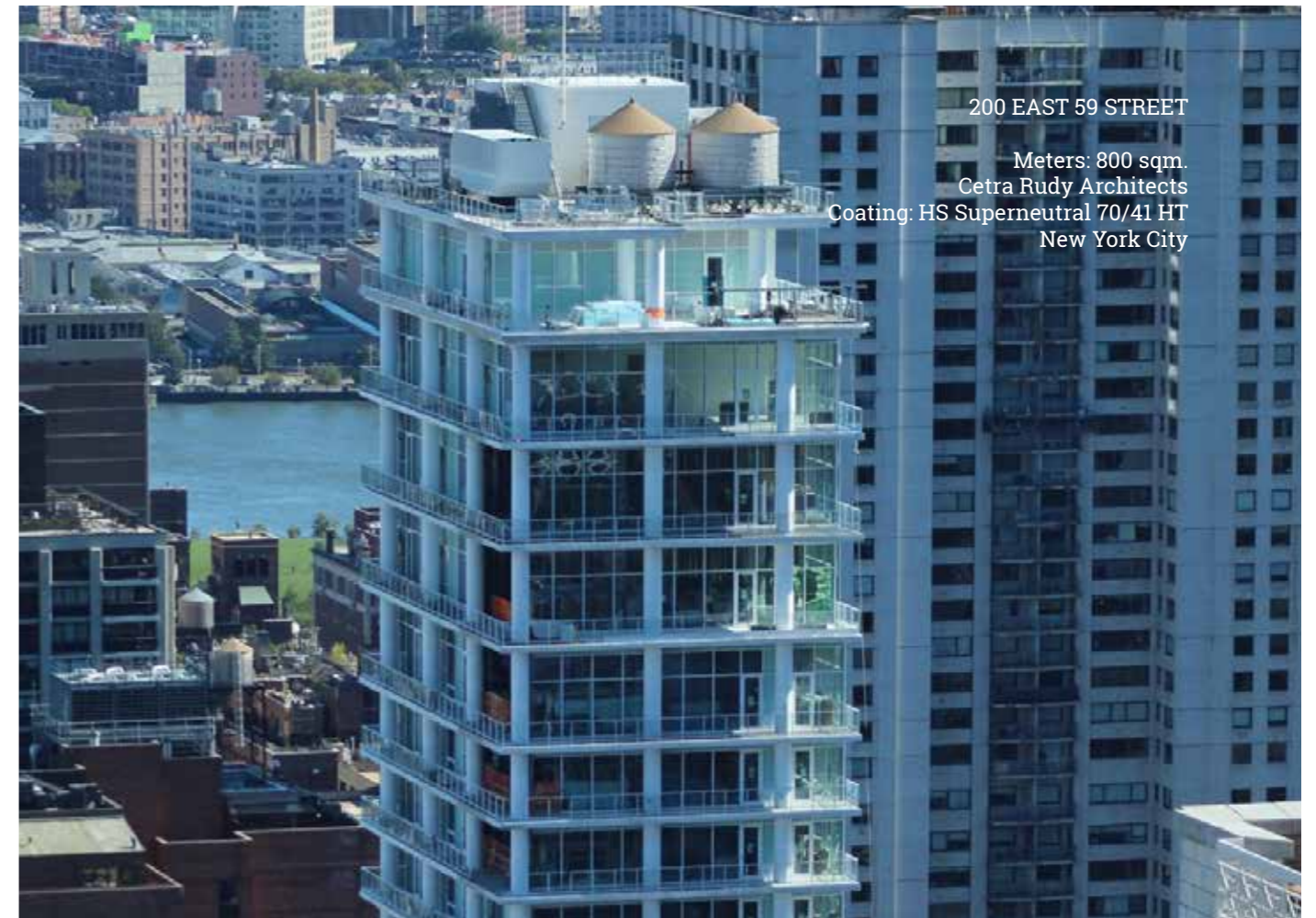
Meters: 3.800 sqm.
B+H ARchitects
Triple. Planitem XNII
Toronto. Canada





ONE DALTON STREET.
FOUR SEASONS & RESIDENCES

Meters: 24.000 sqm.
Pei Cobb Freed Architects
High- 226 m. 61-stories
Coating: Guardian SN 70/41
Boston



200 EAST 59 STREET
Meters: 800 sqm.
Cetra Rudy Architects
Coating: HS Superneutral 70/41 HT
New York City



CAPITAL ONE BLOCK C
Meters: 2.100 sqm.
HGA - Hammel, Green & Abrahamson, Inc.
Coating: Sunguard SN 70/37 on Low-iron.
Vancouver, Canada



LCBO TOWER

B + H Architects
Coating: SG HS Superneutral 40/23
Toronto, Canada



30 EAST

Morris Adjami Architects
Coating: Stopray Vision 72T
New York City



22-24 JACKSON AVENUE

ODA Architects
Coating: Superneutral HS 70/37 HT
Long Island



328 EAST 62nd STREET

CookFox Architects
Coating: Sunguard Light Blue 52
New York City



44 TH DRIVE

Hill West Architects
Coating: SG HS Superneutral 70/41 HT
New York City



19 DUNCAN ROAD

Hariri Pontarini Architects
Coating: Sunguard 50/32
Toronto, Canada



1441 L STREET

DEP Architects
Low-e Coating: SG SNX 50HT
Washington DC



301 EAST 80th STREET

Sofield Studios
Coating: Sunguard SN 70 S
New York City

NORDSTROM FLAGSHIP STORE. CENTRAL PARK TOWER

Meters: 13.000 sqm.

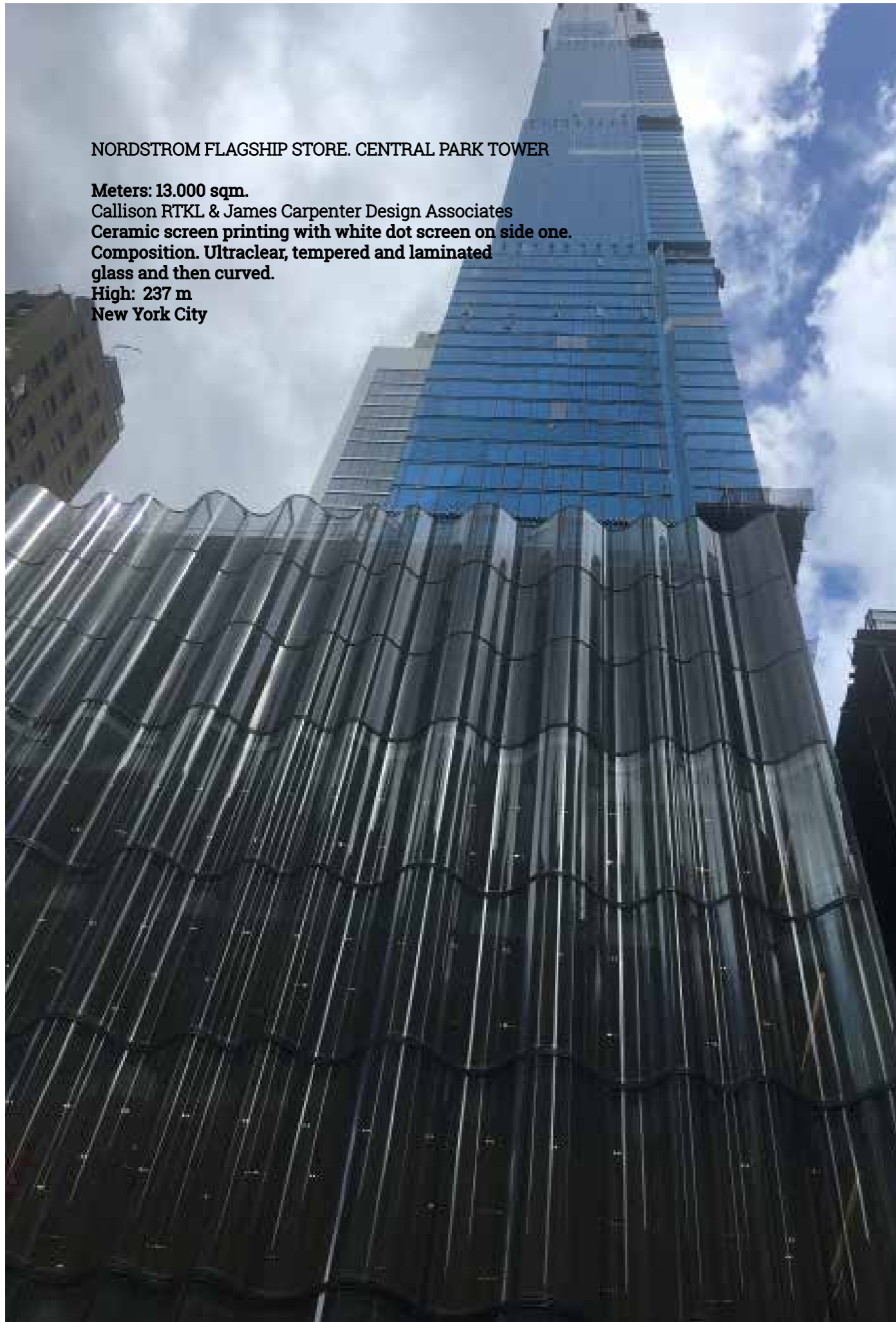
Callison RTKL & James Carpenter Design Associates

Ceramic screen printing with white dot screen on side one.

Composition. Ultraclear, tempered and laminated glass and then curved.

High: 237 m

New York City





LG ELECTRONIC HQ. NORTH BUILDING

HOK Architects
 Coating: Sunguard HS SN 62/34
 Englewood Cliffs. EE.UU.



MACKIMMIE TOWER.

Dialog Architects
 Coating: Climaguard PremiumT / Climaguard Dry
 Calgary. Canada.



1901 L STREET

Fox Architects
 Coating: Climaguard Premium 2
 Washington



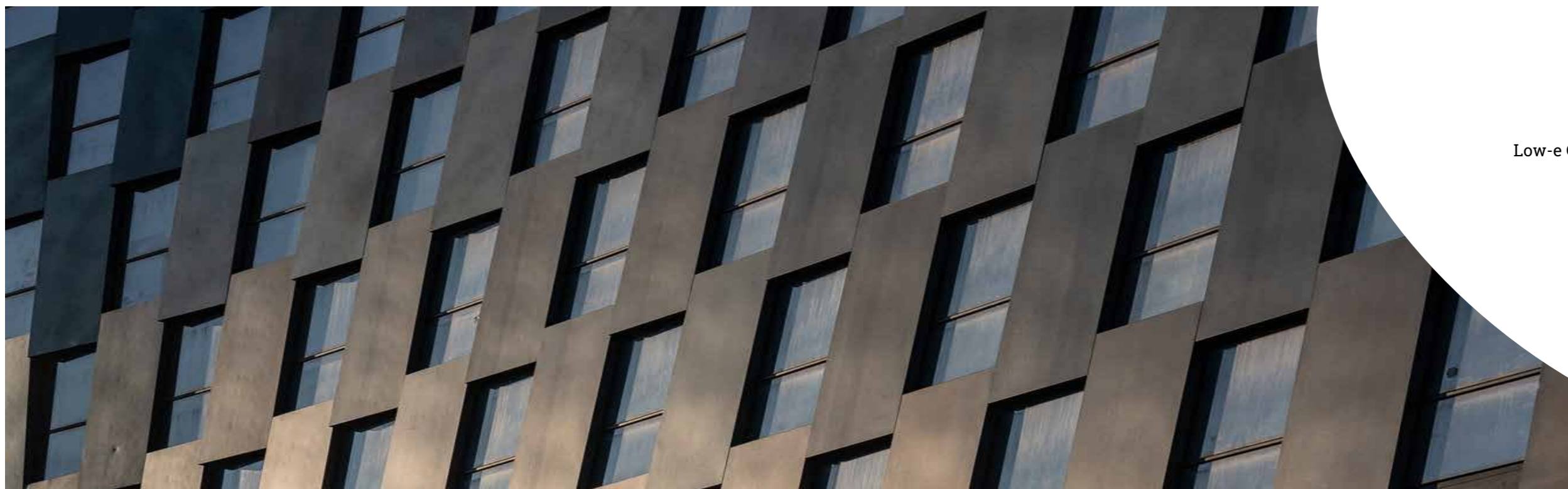
DIVERSITY GARDENS

Architecture 49 whit KPMB Architects
 Coating: SN 70/41
 Winnipeg, Manitoba. Canada



98 FRONT STREET

ODA Architecture
Coating: Sunguard SNX 50 10mm | Extraclear.
New York City.



GOTHAM RESIDENTIAL

BIG Architects
Low-e Coating: SG Neutral HP 50/32
New York City

ONE VANDERBILT

Meters: 60.000 sqm.
KPF Architects
Coating: Guardian HP 50/32
High. 427 m
New York City

Set to become the tallest office tower in Midtown, One Vanderbilt will skillfully meet the market demands of Midtown East as it transforms the civic experience of the Grand Central District. Following the

layered architectural language of neighboring New York City icons, One Vanderbilt joins the Chrysler Building and Empire State Building as one of three point towers to define the city's renowned skyline.





TVITEC

El Vidrio de otra Dimensión | #PassionforGlass