



portals[®]

Summer/Spring 2018

Oceana and Taiga Suites



portals®

We would like to introduce you to the two newest Suites in the Portals product line, ***Oceana*** and ***Taiga***. These classic designs have been available for the last 50 years, but we have added technical improvements that meet current-day customer expectations.



Oceana and Taiga hinges are manufactured with a patented, built-in clear silicon gasket. The gasket is recessed making for a better looking product that is much easier to install. Unlike with our competitors' products, you won't experience a gasket creeping out from the edges to ruin the clean lines of your bathroom fixtures.

Our hinges are engineered to facilitate a tighter fit of the glass shower door to the wall installation. A curved cutout, or "scallop", in the hinge mounting plate, makes the tight fit possible; keeping more water in the shower and off the floor. This feature is not available with our competitors' hinges.

Like all of our products, Oceana and Taiga are suited designs. To take the guesswork out of coordinating bathroom fixtures, we have grouped together products that complement each other in both consistent design and finish. We offer all of our hinge products with coordinating handles, knobs, hooks, & towel bars which can be mounted on glass, tile, stone or drywall. This is another step towards becoming your one-stop manufacturer for bathroom hardware!

As with all Portals Hardware products, we are pleased to provide you with our Lifetime Warranty. This compares to our competitors' limited 3-year warranty and is available to you because of the standardized process by which we control the design and manufacturing of our products.



Oceana Standard Duty Hinges



90° Wall/Glass Beveled Hinge*
OCN80141/OCN80041*



**90° Wall/Glass Beveled Hinge
Offset Back Plate**
OCN80146/OCN80046*

New!



180° Glass/Glass
OCN80144/OCN80044*

New!



90° Adjustable Wall/Glass
OCN80147

Oceana Heavy Duty Hinges



90° Wall/Glass Beveled Hinge*
OCN80171/OCN80071*

**90° Wall/Glass Beveled Hinge
Short Back Plate**
00462/00462-85*



**90° Wall/Glass Beveled Hinge
Offset Back Plate**
OCN80176/OCN80076*



New!



135° Neo-Angle Glass/Glass Hinge
OCN80173/OCN80073*



180° Glass/Glass Beveled Hinge
00454/00454B*

Oceana Hinge Stock Finishes

● Oil Rubbed Bronze Dark 613 ● Oil Rubbed Bronze Medium 614 ● Brushed Nickel 619 ● Polished Chrome 625

Oceana Standard Duty Pivot Hinges



**Standard Pivot Hinge
Top or Bottom Mount**
OCN80161



**Pivot Hinge w/Non-Handed
Horizontal Wall Bracket**
OCN80162



**Pivot Hinge w/Non-Handed
Vertical Wall Bracket**
OCN80163



**Pivot Hinge w/Non-Handed
Standard Bracket for Header**
OCN80164



**Pivot Hinge w/Non-Handed
Adjustable Bracket for Header**
OCN80165



Oceana Heavy Duty Pivot Hinge
OCN80191

Oceana Heavy Duty Adjustable Hinges



**Adjustable 135° Neo-Angle
Glass/Glass Beveled Hinge**
00468







**Adjustable Wall/Glass
Beveled Hinge**
00465



**Adjustable 180° Glass/
Glass Hinge**
OCN80180

Oceana Hinge Stock Finishes

 Oil Rubbed Bronze Dark 613
  Oil Rubbed Bronze Medium 614
  Brushed Nickel 619
  Polished Chrome 625

Oceana Clamps



**Heavy Duty 90° Wall/Glass
Beveled Clamp**
00357



**Outside Square
90° Glass/Glass Beveled Clamp**
00356



**Wall/Glass
Beveled Clamp**
00355



135° Glass/Glass Beveled Clamp
OCN80153

180° Glass/Glass Beveled Clamp
OCN80154

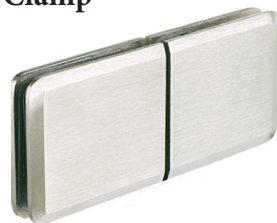


Oceana Operable Transom Clamps

**Wall/Glass Operable
Beveled Transom Clamp**
00351



**Glass/Glass Operable
Beveled Transom Clamp**
00352



Oceana Clamp Stock Finishes

● Oil Rubbed Bronze Dark 613 ● Oil Rubbed Bronze Medium 614 ● Brushed Nickel 619 ● Polished Chrome 625

Taiga Standard Duty Hinges



90° Wall/Glass Hinge
TAG81141/TAG81041*

**90° Wall/Glass Hinge
Short Back Plate**
TAG81148/TAG81048*



180° Glass/Glass Hinge
TAG81144/TAG81044*

**90° Wall/Glass Hinge
Offset Back Plate**
TAG81146/TAG81046*



Taiga Heavy Duty Hinges



90° Wall/Glass Hinge
TAG81171/TAG81071*



180° Glass/Glass Hinge
TAG81174/TAG81074*

**90° Wall/Glass Hinge
Offset Back Plate**
TAG81176/TAG81076*



**90° Wall/Glass Hinge
Short Back Plate**
TAG81175/TAG81075*



Taiga Hinge Stock Finishes

- | | | |
|--|--|---|
|  Oil Rubbed Bronze Dark 613 |  Oil Rubbed Bronze Medium 614 |  Polished Nickel 618 |
|  Brushed Nickel 619 |  Polished Chrome 625 | |

* Hinges available with a 5° preset to allow tighter shower door closure

Taiga Standard Duty Pivot Hinges



**Standard Pivot Hinge
Top or Bottom Mount**
TAG81161



**Pivot Hinge w/Non-Handed
Horizontal Wall Bracket**
TAG81162



**Pivot Hinge w/Non-Handed
Vertical Wall Bracket**
TAG81163



**Pivot Hinge w/Non-Handed
Standard Bracket for Header**
TAG81164



**Pivot Hinge w/Non-Handed
Adjustable Bracket for Header**
TAG81165

Taiga Standard Duty Adjustable Hinges

**Adjustable
Wall/Glass Hinge**
00413



**Adjustable
Glass/Glass Hinge**
00414



Oil Rubbed Bronze Dark 613



Oil Rubbed Bronze Medium 614



Polished Nickel 618



Brushed Nickel 619



Polished Chrome 625

Taiga Hinge Stock Finishes

Taiga Heavy Duty Adjustable Hinges



**Adjustable
Wall/Glass Hinge**
TAG81178



**Adjustable
Glass/Glass Hinge**
TAG81180



**Adjustable 135° Neo-Angle
Glass/Glass Hinge**
00418




**Adjustable Wall/Glass Hinge
Offset Back Plate**
TAG81181

Taiga Ultra Heavy Duty Hinges



**Adjustable Heavy Duty Wall/
Glass Hinge**
TAG81201

Taiga Hinge Stock Finishes

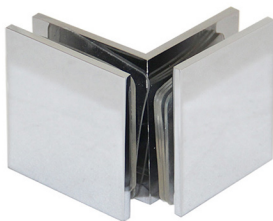
- | | | |
|--|--|---|
|  Oil Rubbed Bronze Dark 613 |  Oil Rubbed Bronze Medium 614 |  Polished Nickel 618 |
|  Brushed Nickel 619 |  Polished Chrome 625 | |

Taiga Clamps



**Heavy Duty
90° Wall/Glass Clamp**
00307

**90° Glass/Glass
Inside Square Clamp**
00308



Wall/Glass Clamp
00305

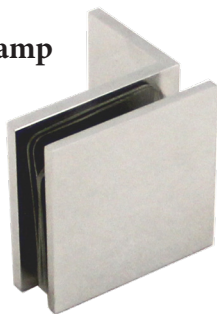


135° Glass/Glass Beveled Clamp
TAG81153



**90° Glass/Glass
Outside Square Clamp**
00306

90° Wall/Glass Clamp
00303



180° Glass/Glass Beveled Clamp
TAG81154



Taiga Operable Transom Clamps





**Wall/Glass Operable
Transom Clamp**
00301

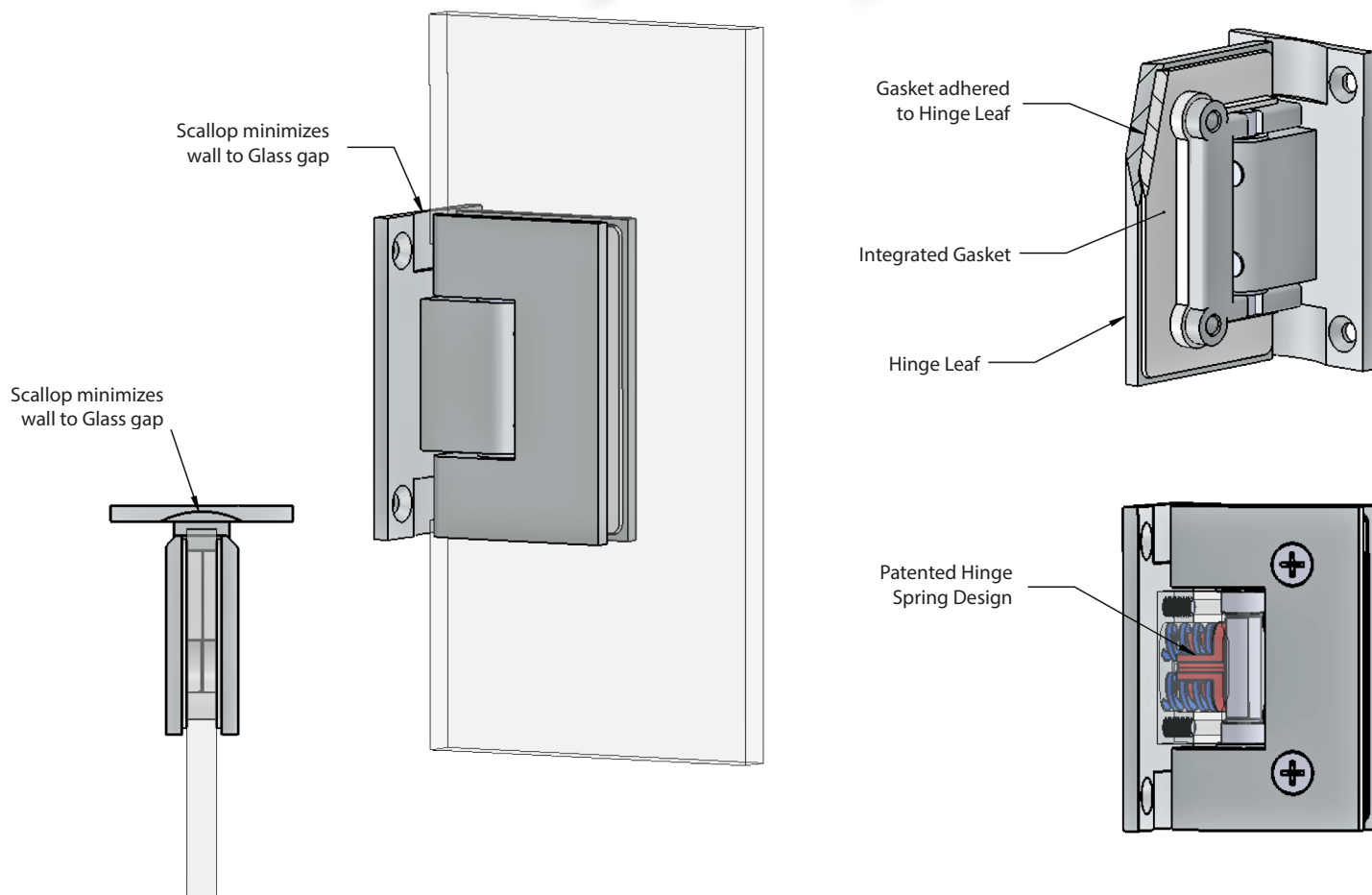


**Glass/Glass Operable
Transom Clamp**
00302

Taiga Clamp Stock Finishes

- | | | |
|--|--|---|
|  Oil Rubbed Bronze Dark 613 |  Oil Rubbed Bronze Medium 614 |  Polished Nickel 618 |
|  Brushed Nickel 619 |  Polished Chrome 625 | |

How Portals Hinges are Different:



Door Size Specifications for Portals Hinges

<u>Hinge Specifications</u>	<u>Standard Duty</u>		<u>Heavy Duty</u>		<u>Super Heavy Duty</u>		<u>Standard Duty Pivot</u>
	2 Hinges	3 Hinges	2 Hinges	3 Hinges	2 Hinges	3 Hinges	2 Hinges
Maximum Door Width:	28"	32"	36"	38"	38"	40"	32"
Maximum Door Weight:	80 lbs.	120 lbs.	110 lbs.	150 lbs.	160 lbs.	180 lbs.	110 lbs.
Max. Weight per Hinge:	40 lbs. max	40 lbs. max	55 lbs. max	55 lbs. max	80 lbs. max	80 lbs. max	N/A
Max. Weight per Bottom Hinge:	N/A		N/A		N/A		110 lbs.
Glass Thickness::	3/8" to 1/2"		3/8" to 1/2"		3/8" to 1/2"		3/8" to 1/2"

Formula to Determine Weight of Glass Door:

Determine Sq. Ft.: (width x height = sq. inches) (divide sq. inches by 144 = sq.ft)

Determine Door Weight: (mutiply sq. ft. x weight/sq. ft. = weight of glass)

3/8" glass = 5.05 lbs./sq.ft.

1/2" glass = 6.40.lbs./sq.ft

Oceana Suite



Single knob no sleeve
OCN80123



6" c/c Double Pull
00209

8" c/c Double Pull
00210

Double knob no sleeve
OCN80124



Single Knob with Sleeve
00501

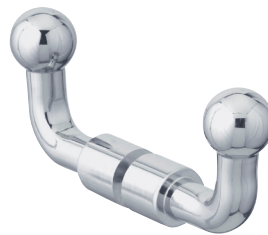


6" c/c Double Pull with Rosettes
00211

8" c/c Double Pull with Rosettes
00212



Double Knob with Sleeve
00502



Double Robe Hook
00602



Single Robe Hook
00601



Double Robe Hook with Rosettes
00612



Single Robe Hook with Rosette
00611

Oceana Stock Finishes

- Oil Rubbed Bronze Dark 613
- Oil Rubbed Bronze Medium 614
- Polished Nickel 618
- Brushed Nickel 619
- Polished Chrome 625

18" c/c Towel Bar x 6" Pull

00807

24" c/c Towel Bar x 6" Pull

00805



18" c/c Towel Bar x 8" Pull

00803

24" c/c Towel Bar x 8" Pull

00804

**18" c/c Towel Bar x 6" Pull
with Rosettes**

00813

**24" c/c Towel Bar x 6" Pull
with Rosettes**

00814



**18" c/c Towel Bar x 8" Pull
with Rosettes**

00817

**24" c/c Towel Bar x 8" Pull
with Rosettes**

00815



18" c/c Single Towel Bar

00701



24" c/c Single Towel Bar

00702

**18" c/c Single Towel Bar
with Rosettes**

00711



**24" c/c Single Towel Bar
with Rosettes**

00712

18" c/c Double Towel Bar

00704



24" c/c Double Towel Bar

00705

**18" c/c Double Towel Bar
with Rosettes**


00714



**24" c/c Double Towel Bar
with Rosettes**

00715

Oceana Stock Finishes

- | | | |
|--|--|---|
|  Oil Rubbed Bronze Dark 613 |  Oil Rubbed Bronze Medium 614 |  Polished Nickel 618 |
|  Brushed Nickel 619 |  Polished Chrome 625 | |

Taiga Suite

6" c/c Double Square Pull
00204

8" c/c Double Square Pull
00205



6" c/c Single Square Pull
00206

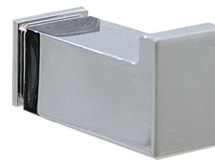
8" c/c Single Square Pull
00207

18" c/c Single Square Towel Bar
00706

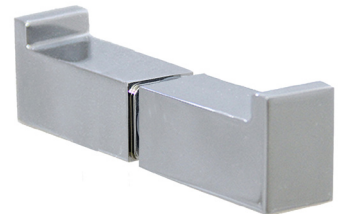
24" c/c Single Square Towel Bar
00707



Photo courtesy of Oasis Shower Doors, Feeding Hills, MA 01030



Single Square Robe Hook
TAG81128



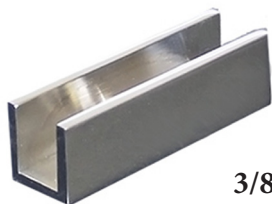
Double Square Robe Hook
TAG81129

Taiga Stock Finishes

- Oil Rubbed Bronze Dark 613
- Oil Rubbed Bronze Medium 614
- Polished Nickel 618
- Brushed Nickel 619
- Polished Chrome 625

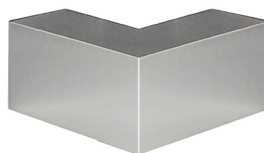
Sleeve Over Structural System

(No Holes Required)

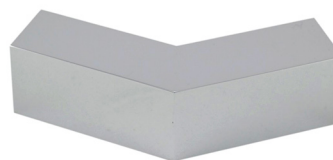


3/8" Mini Channel
00320

1/2" Mini Channel
TAG81350



**90° Sleeve Over Corner
Glass Clamp**
00321



135° Sleeve Over Glass Clamp
TAG81325



**180° Sleeve Over
Glass Clamp**
00322



**90° Left Hand Inside
Sleeve Over Corner Clamp**
00324



**90° Right Hand Inside
Sleeve Over Corner Clamp**
00325

Sleeve Over Structural System Stock Finishes

- -
 -
- Antique Brass 509 Polished Brass 605 PVD Oil Rubbed Bronze Dark 613
 Oil Rubbed Bronze Medium 614 Satin Nickel 617 Polished Nickel 618 Brushed Nickel 619
 Polished Chrome 625 Brushed Chrome 626

portals[®]

luxury hardware & accessories



Please visit portalshardware.com for:

- complete product listing
- pricing
- specifications
- templates
- stock finishes
- purchasing
- door and wall mounting options

portals
is manufactured by:

The Group Legacy
925 Lydia Ave
Kansas City, MO 64106 USA

email: email@portalshardware.com
phone: 816.942.7413
fax: 816.942.7414

visit portalshardware.com