



A+W Enterprise



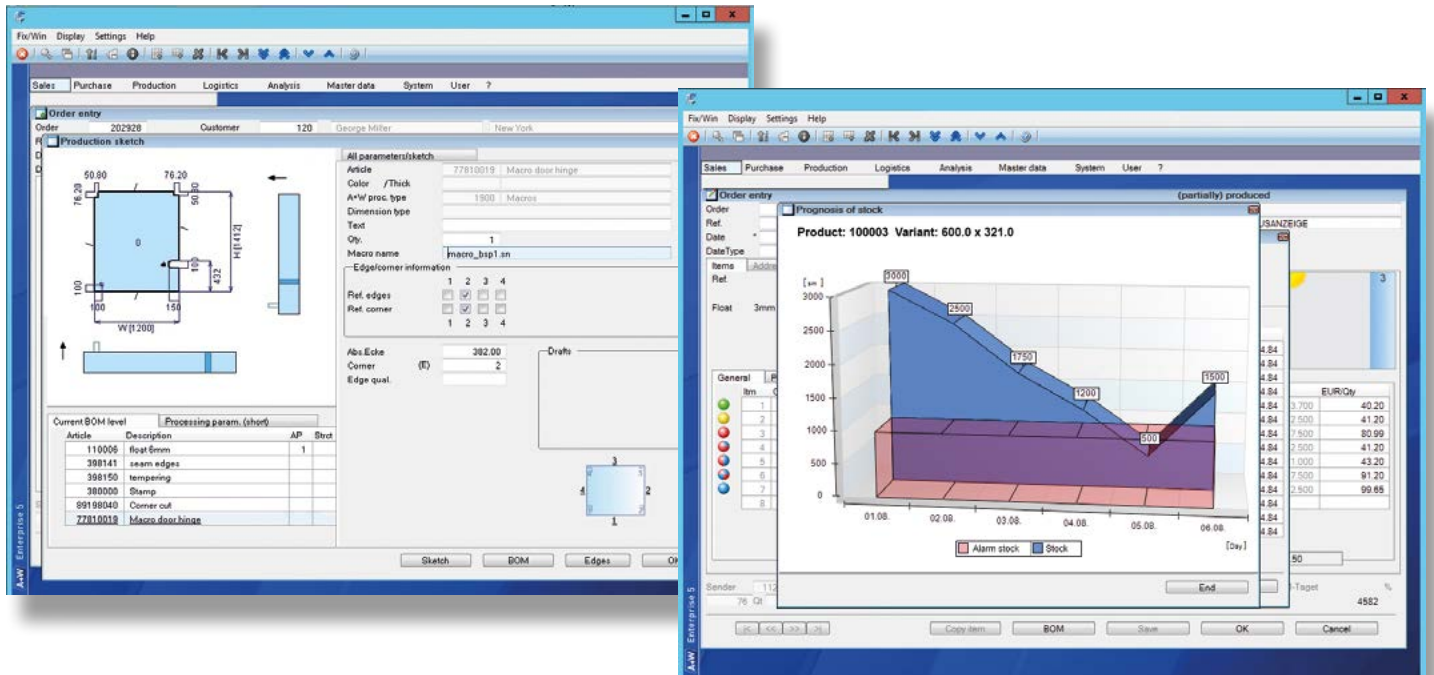
The group solution.

A+W Enterprise is an integrated, database-based overall ERP solution for the flat glass industry. The system is designed for groups of companies and upper-middle class companies with several subsidiaries, and is being used by major players in the flat glass industry world-wide.

A+W – Software for Glass and Windows



Managing what needs to be done



A+W Enterprise functions

A+W Enterprise is a fully integrated, ERP system suitable for multi-client application, for corporates and bigger companies in the flat glass processing industry.

The system comprises sales management, sales support, purchasing management, inventory management, and dispatch planning. A+W Enterprise can also be run as a web application on the Internet.

A+W Enterprise consists of three architectural levels: Presentation, application logic, and database. These can be installed and run on different computers to increase the system's scalability and failsafe performance. The application is based on a relational database and is available as a LINUX-, UNIX-, or Microsoft Windows version.

A+W Enterprise can manage several clients simultaneously. The individual process steps are handled simultaneously for all integrated areas of the system (sales, purchasing, inventory, production, dispatch) and is highly automated. Incoming enquiries and

orders can be entered in a central call center and will be automatically distributed to the individual production sites.

In addition to a number of order interfaces, the HTML 5 web application A+W Enterprise also allows to enter quotations and orders online. The advantages of the browser-based layout are not just the mobile operation and direct access to the system for branches and agents: Using the browser solution in-house will save precious time and money thanks to the significantly reduced installation, update, and system management work.

Modules:



A+W CAD Designer



A+W Discovery



A+W Sharepoint DMS

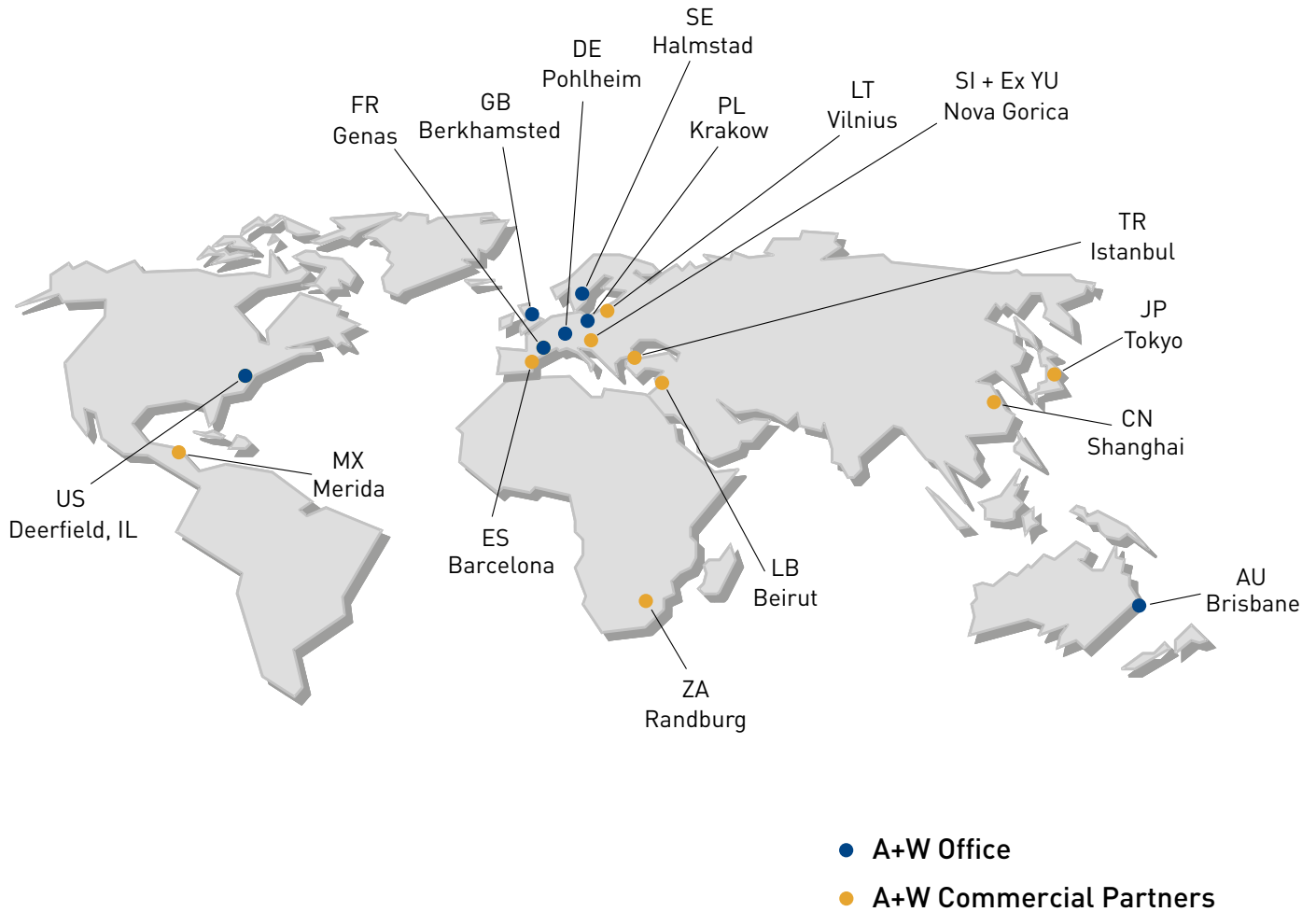


The system can be easily adapted (customized) to the user's individual needs and therefore offers a wide range of options combined with a high degree of user-friendliness.

Your Benefits:

- Distribution of offers and orders across various companies thanks to multi-site capability
- Completely automatic handling of group-internal orders between different A+W Enterprise systems
- Mapping of centralized and decentralized company/group networks (branch office structures)
- Reduction of input errors thanks to visual input assistance and automatic adaptation of the parts lists
- Quick process and order handling thanks to automated processes in purchasing, sales, dispatch, and warehouse
- Quick recording and processing of large quantities of orders
- Great system stability and security based on UNIX system and Informix database
- Time and cost savings thanks to graphical user interface

A+W Software USA Inc.
One Parkway Drive 400S
Deerfield
Illinois, 60015
Tel. + 1 312 470 6645 (Main Number)
Tel. + 1 888 254 2915 (Toll Free)
Fax + 1 847 948 9425
usa@a-w.com
www.a-w.com



A+W – the global market leader in the flat glass industry for midmarket and enterprise customers for more than 35 years.

Our long-term experience is your value for Glass and Curtain Walls, Windows and Doors.

A+W – Your Trusted Advisor

A+W – Software for Glass