



A+W Business Pro



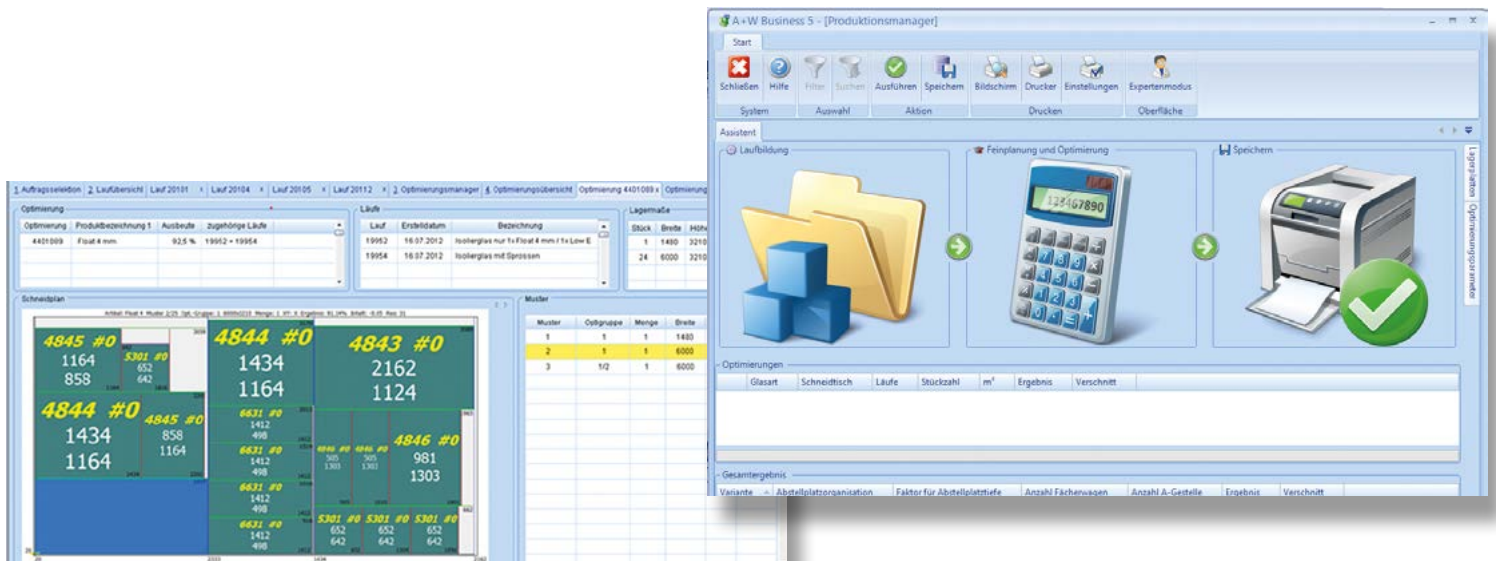
Integrated Production Control.

A+W Business Pro is a fully integrated solution of the latest generation for small and medium-sized companies. The process from quotation to dispatch has never been easier!

A+W – Software for Glass and Windows



Integrated order management with one-click production



The “Pro” part of the name

A+W Business Pro is a professional and cost-effective entry-level solution for small and medium-sized companies, with fully integrated order processing and production planning.

Business

A+W’s commercial solution does not only permit to enter quotations, orders, credit notes, complaints, delivery notes, and to handle purchase orders and enquiries but also to control other areas of the company (e.g. stock, purchasing, dispatch, etc.).

When developing A+W Business Pro, the central question for the A+W team has been: How can we support our customers to make their work faster, more elegant, more purposeful, and all in all more productive? The result is impressive: Ergonomics, transparency, and user-friendliness of the present version are vastly improved. A+W Business Pro comes as a multi-dialog application which means that several dialogs – like quotation-, order-, and additional master dialogs for instance – can be opened and edited simultaneously. Menus and dialogs can be positioned freely, their size can be adjusted by just a click of the mouse.

With the new editor, documents can be formatted attractively, and the report functions will satisfy even the highest demands. With its fully graphic user interface, A+W Business Pro can be operated intuitively and simplifies the internal processes connected with order processing.

The system offers extensive technical support for the processing of orders. All entered elements are instantly displayed graphically, true to scale, to help avoiding errors even at the entry stage and to speed up the process as such. Pricing in A+W Business Pro is ultra-flexible and allows manifold classifications into standard prices and customized conditions.

Modules:



A+W CAD Designer



A+W Capacity Planner



A+W Barcode Manager



A+W Realtime Optimizer



A+W Shape Optimizer



A+W Logistics Optimizer

Your Benefits:

- Cost-effective and integrated ERP and production system
- Cost-effective and easy IT infrastructure based on state-of-the-art Microsoft technology (SQL Server and Microsoft Windows)
- Easy, quick production processing and release with wizard function
- Possibility for exact and cut-oriented planning with expert mode
- Low time and cost commitment thanks to intelligent and easy production control (for example production papers and standardized storage organization)
- Secure and correct inventory thanks to reports from production
- Easy and quick output of production papers and NC code for cutting tables, ISO lines, and frame benders



Production

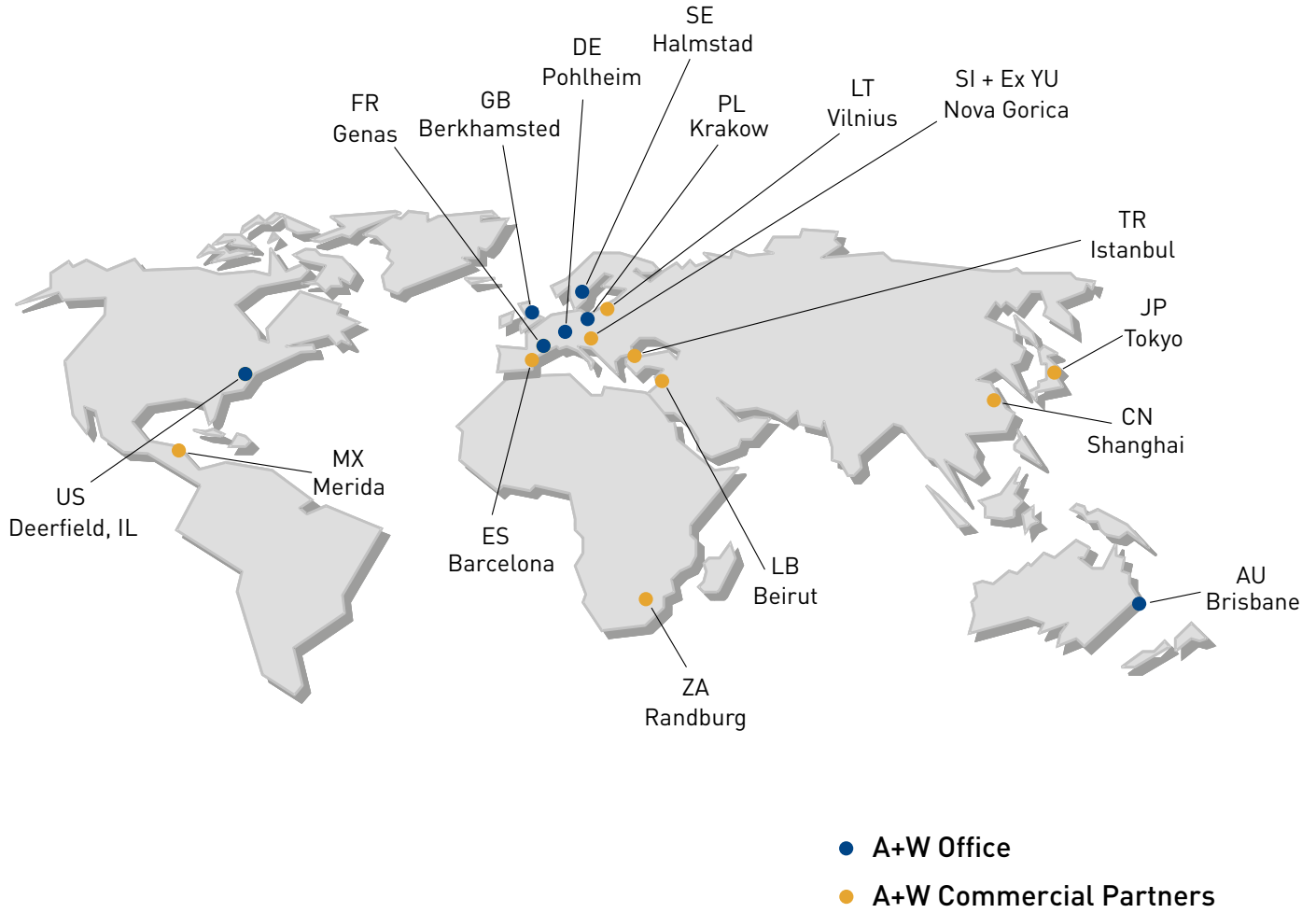
Order data are available for production planning right away. Thanks to the integrated "wizard function", the process of batch creation and optimization, up to the release for production does not require much more than a mouse-click. Users can activate the so-called "expert mode" anytime and thus have direct influence on the results.

However, this will be the exception because the cutting optimization per batch and glass type is based on cutting-edge algorithms, providing users with excellent results due to intelligent variations regarding rack depth, jumbo sizes, and optimization parameters.

A+W Business Pro can be easily extended by the existing supplements like "A+W Capacity Planner (entry solution)" and "A+W Barcode Manager (entry solution)".

When your company grows, the system can be easily upgraded to the premium solution "A+W Production" which allows the complete import of existing and non-production-specific transaction data.

A+W Software USA Inc.
One Parkway Drive 400S
Deerfield
Illinois, 60015
Tel. + 1 312 470 6645 (Main Number)
Tel. + 1 888 254 2915 (Toll Free)
Fax + 1 847 948 9425
usa@a-w.com
www.a-w.com



A+W – the global market leader in the flat glass industry for midmarket and enterprise customers for more than 35 years.

Our long-term experience is your value for Glass and Curtain Walls, Windows and Doors.

A+W – Your Trusted Advisor

A+W – Software for Glass